

# **H410 Series Setup Transfer Tool manual**

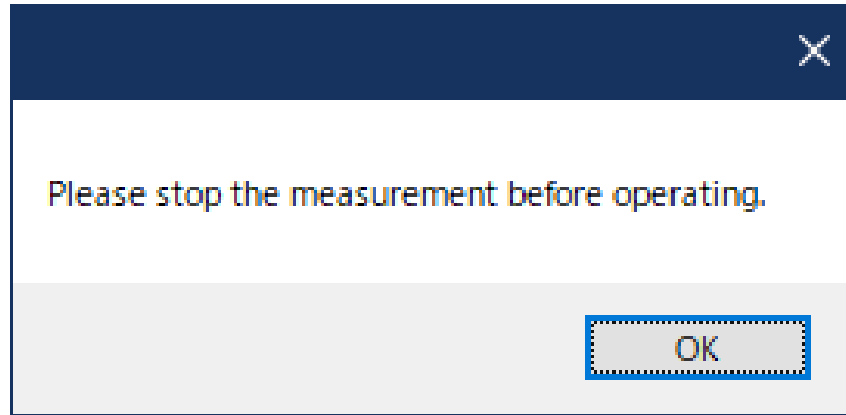
---



1. Notes
2. Preparation - PC network settings (IP address)
3. Preparation - 410 Series System Settings (IP Address)
4. How to start Tool
5. Tool screen description
6. Tool operation instructions - Add Device
7. Tool operating instructions - delete device
8. Tool operating instructions - device connection
9. Tool operating instructions - reconnect device
10. Tool operating instructions - download configuration file
11. Tool operating instructions - upload configuration file
12. Tool operating instructions – Firmware/Embedded software Update

# 1. Notes

---



The setting tool not usable during H410 series measurement.  
Please use after moving to the setting screen

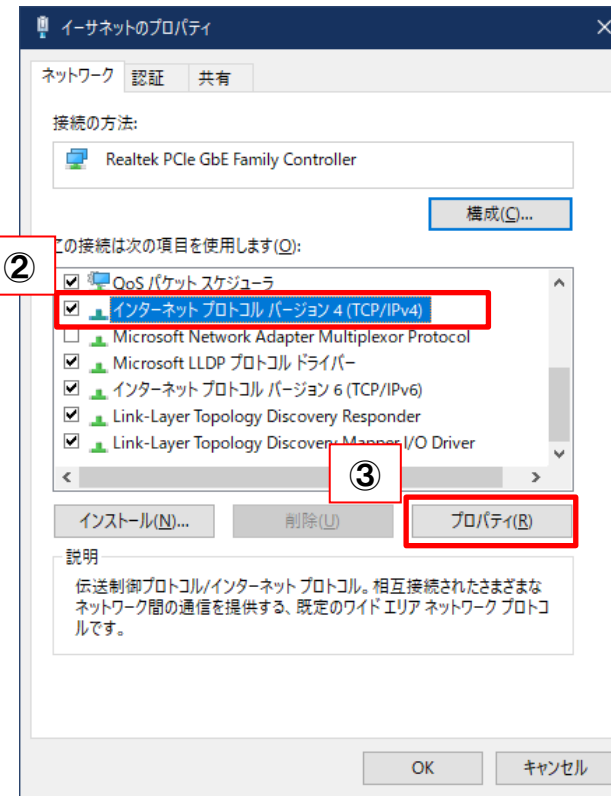
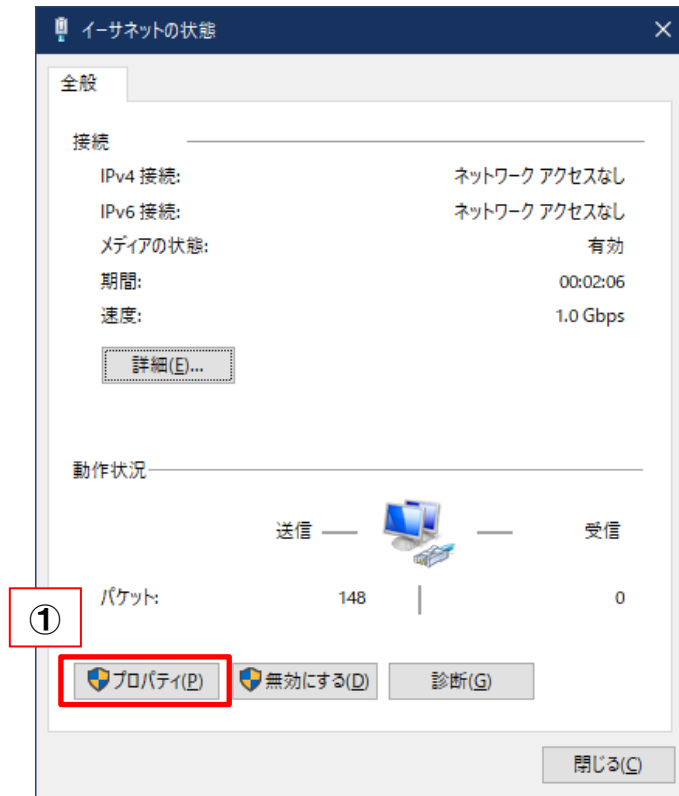
## 2. Preparation-PC network settings (IP address)

To establish the connection between the PC and the H410 series, set the network settings (IP address) on the PC side. (\* Supported OS: Windows10)



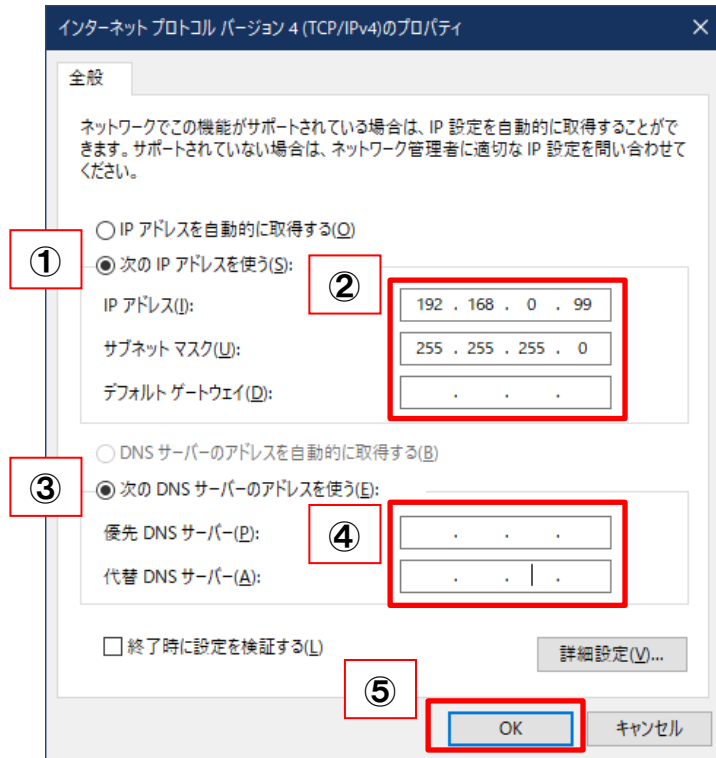
- ① When hardware connection is complete, go to Control Panel> Network and Internet> Network and Sharing Center
- ② Press "Ethernet"

## 2.Preparation-PC network settings (IP address)



- ① Click "Properties"
- ② Make sure that "Internet Protocol Version 4 (TCP / IPv4)" is checked and selected
- ③ Click "Properties(R)"

## 2.Preparation-PC network settings (IP address)



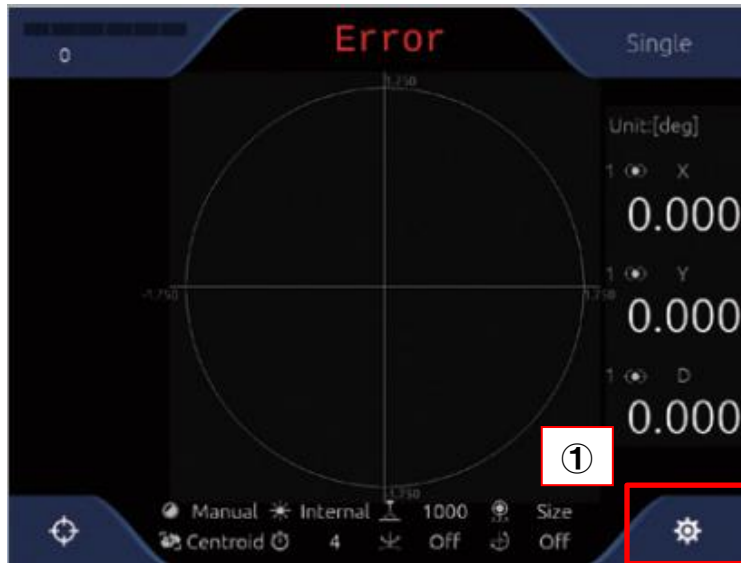
### [Setting Example]

IP Address (I) : 192.168.0.99  
 Subnet mask (U) : 255.255.255.0  
 Default gateway (D) : Blank

- ① Check "Use the following IP address (S)"
- ② Enter "IP address (I)", "Subnet mask (U)", and "Default gateway (D)" referring to above [Setting example]
- ③ Check "Use the following DNS server address (E)"
- ④ No need to enter "Priority DNS server (P)" and "Alternative DNS server (A)"
- ⑤ Click "OK" to complete the IP address setting

### 3. Preparation --H410 Series System Settings (IP Address)

In order to establish the connection between the PC and the H410 series, configure the Ethernet settings (IP address) on the H410 series side.

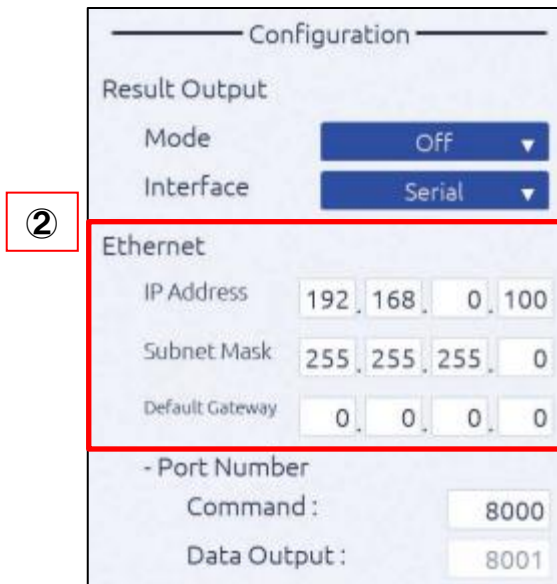


- ① After starting the H410 series, touch "Settings" on the measurement screen

### 3. Preparation --H410 Series System Settings (IP Address)



- ① Touch the tab "system settings"
- ② Enter the Ethernet "IP Address", "Subnet Mask", and "Default Gateway" by referring to the [Setting example] below
- ③ Touch "Save" to complete the IP address setting



#### [Setting sample]

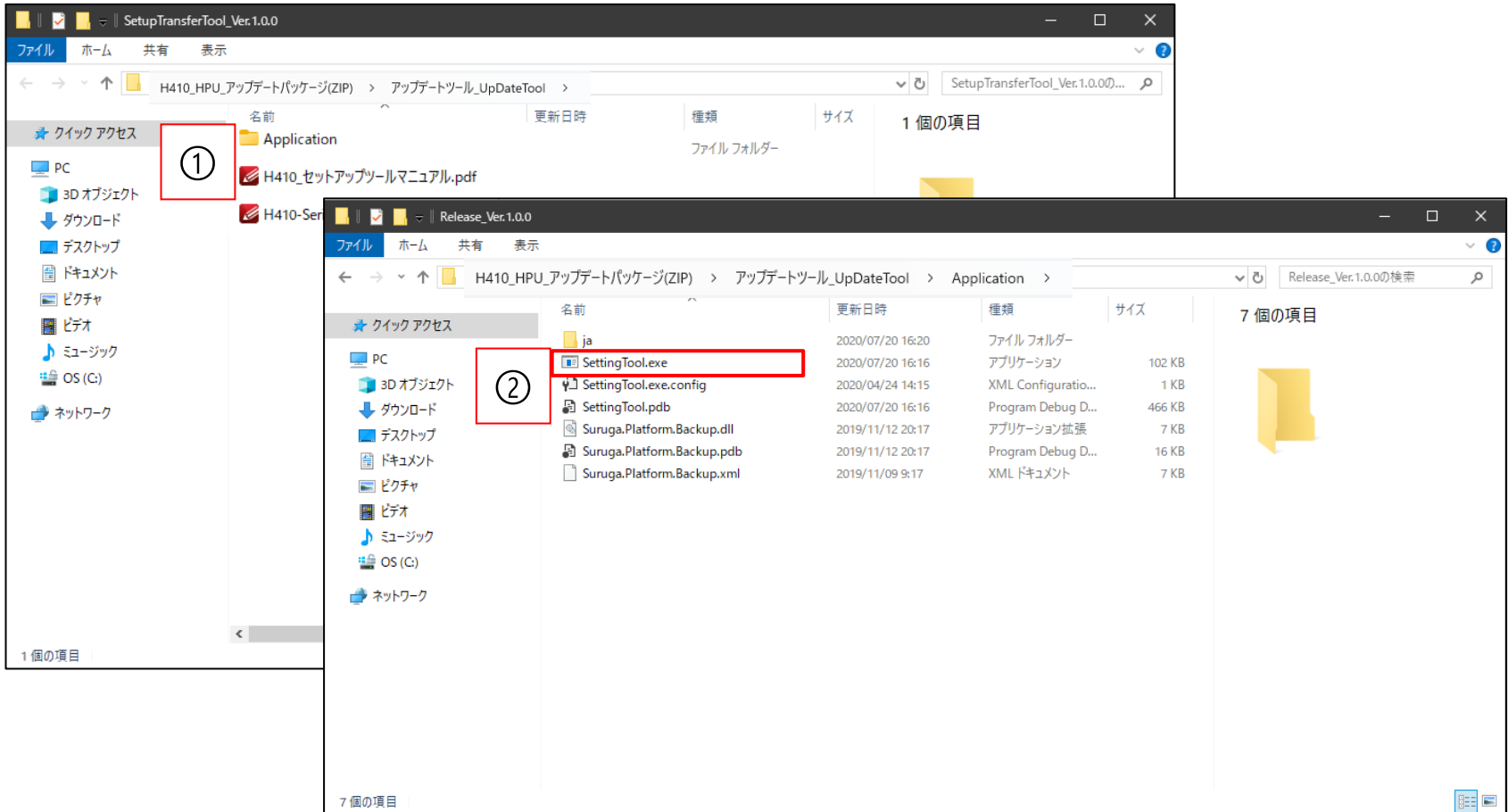
IP Address : 192.168.0.100  
 Subnet Mask : 255.255.255.0  
 Default Gateway : 0.0.0.0

※If the value is not duplicated with the IP address on the PC side (example: 192.168.0.99) set in the previous section, it can be set in the range of 192.168.0.xxx (xxx = 1 to 254).

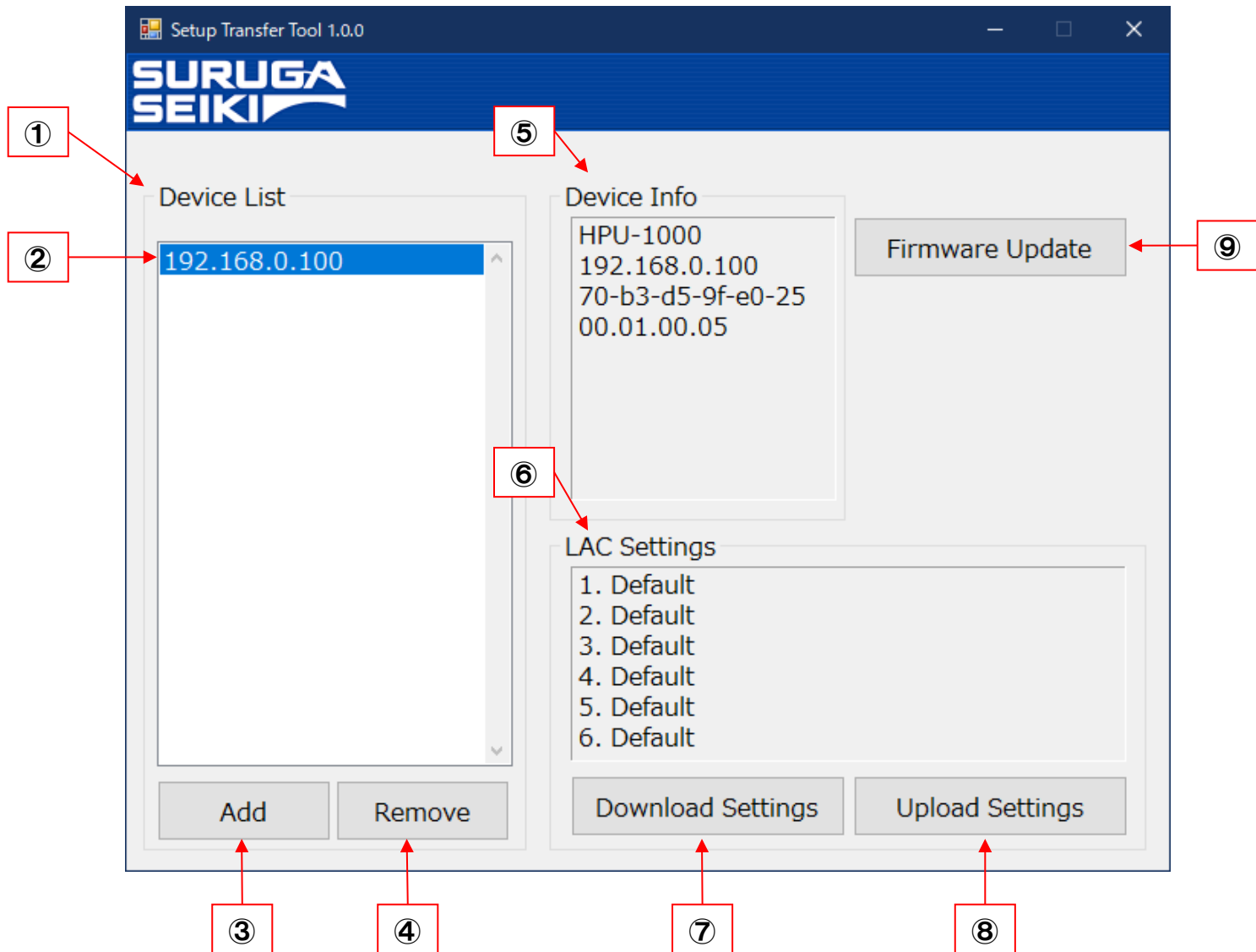


## 4. How to start Tool (this package only)

- ① OPEN 「H410\_HPU\_UpDatePackage」 > 「アップデートツール\_UpDateTool」 > 「Application」
- ② Double Click on “SettingTool.exe” to execute the setup\_tool



## 5. Tool screen description



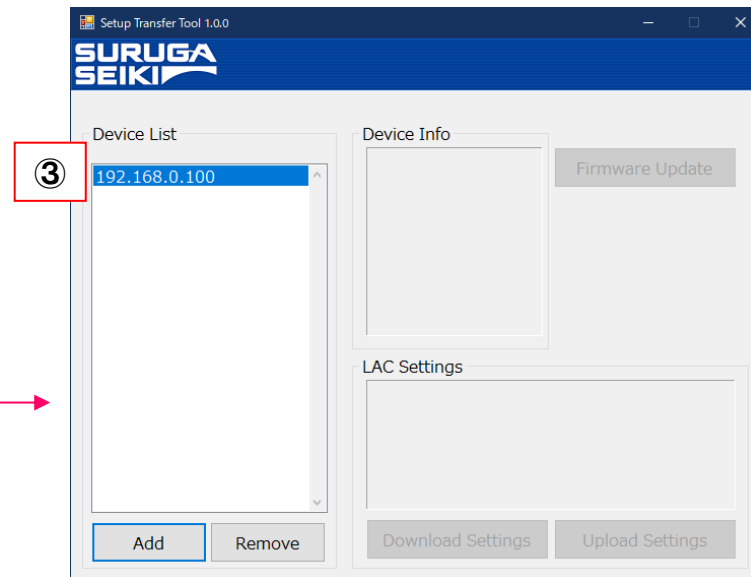
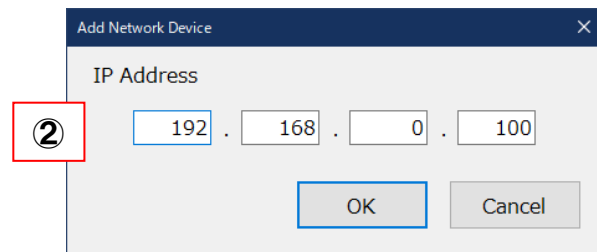
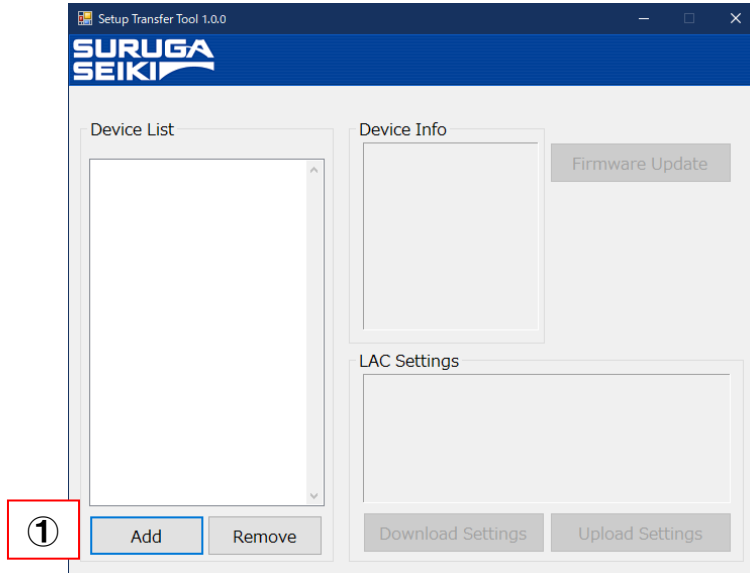
## 5. Tool screen description

---

- |                            |  |
|----------------------------|--|
| ① Device List              | : Lists each device by IP address.                       |
| ② IP address               | : The IP address added in ③ is displayed                 |
| ③ Add button               | : Add an IP address                                      |
| ④ Remove button            | : Delete the added IP address                            |
| ⑤ Device Info              | : Displays the device information of the selected device |
| ⑥ LAC Settings             | : Displays the "setting file" name on the H410 series    |
| ⑦ Download Settings button | : Download the setting file on the H410 series           |
| ⑧ Upload Settings button   | : Upload the setting file on the H410 series             |
| ⑨ Firmware Update button   | : Update the H410 series IPU firmware                    |

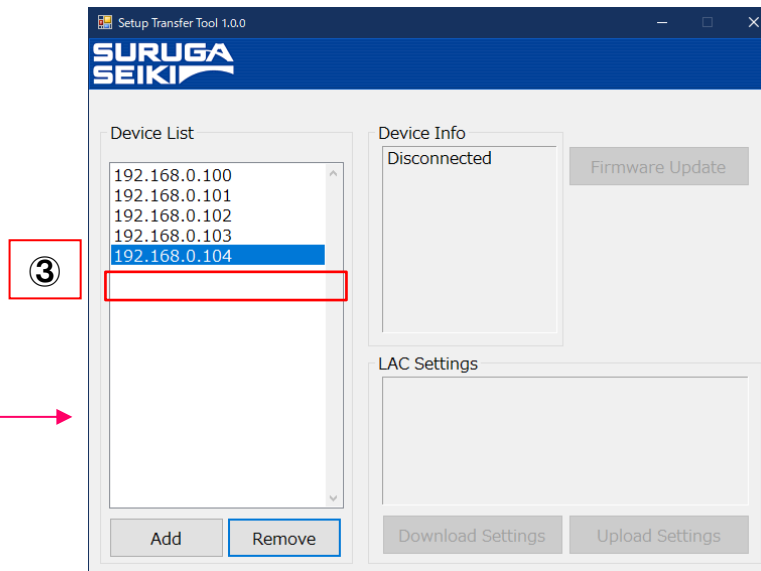
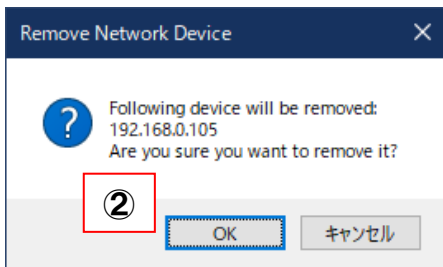
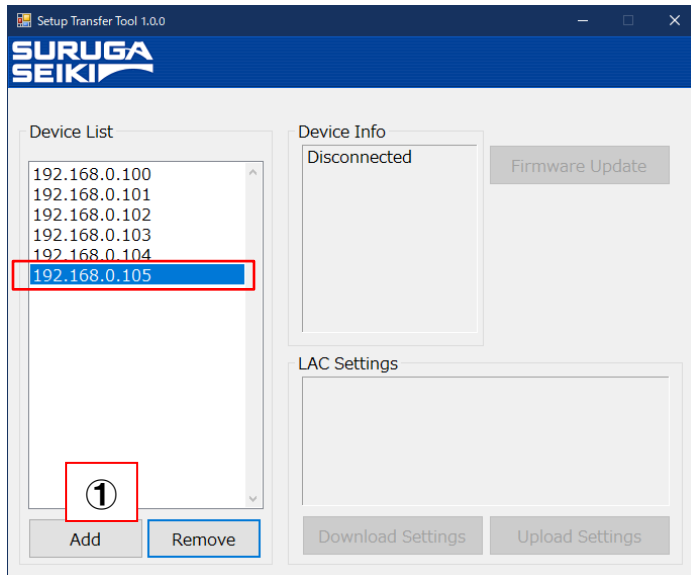
## 6. Tool Operation Instructions-Add Device

- ① Press "Add" button
- ② Enter the IP address set in the previous section "Preparation H410 Series System Settings (IP Address)" and click the "OK" button
- ③ The IP address added to the "Device List" is displayed



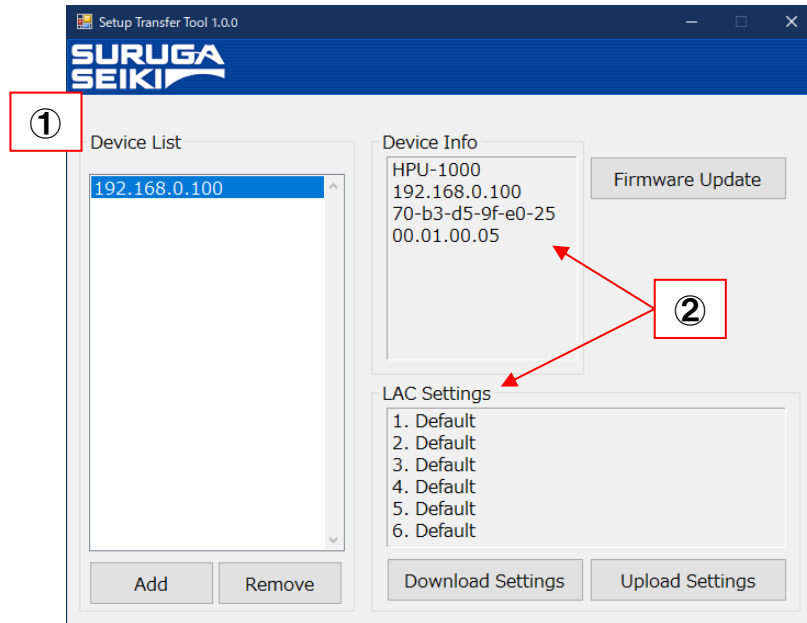
## 7. Tool operating instructions – delete device

- ① Choose "Device List" and push "Remove" button
- ② Press "OK" button
- ③ The IP address selected from the "Device List" will be deleted

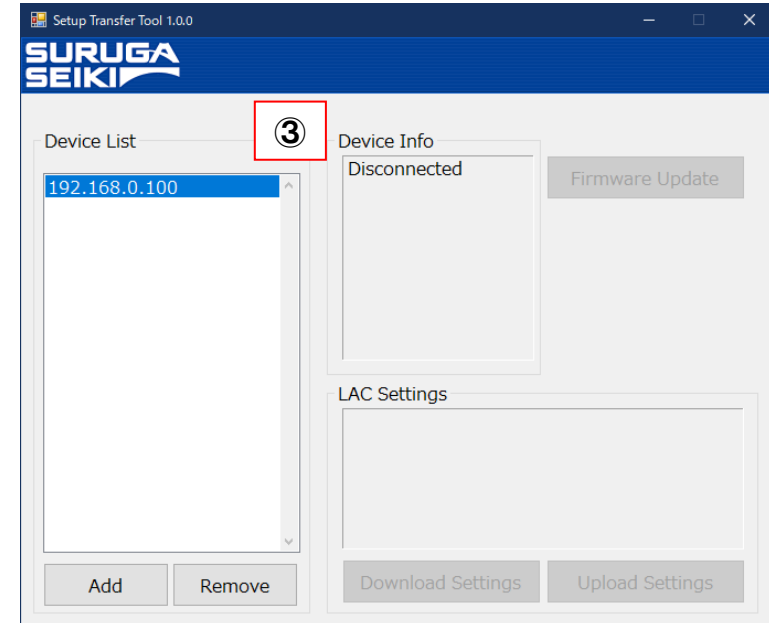


## 8. Tool operating instructions – device connection

Device connecting screen

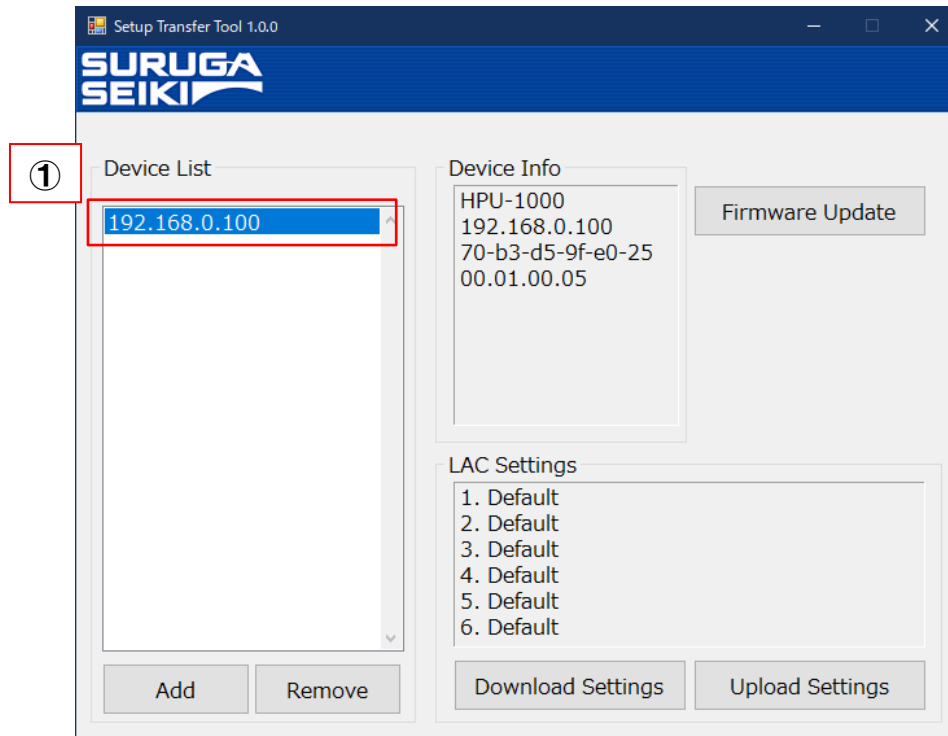


Device unconnected screen



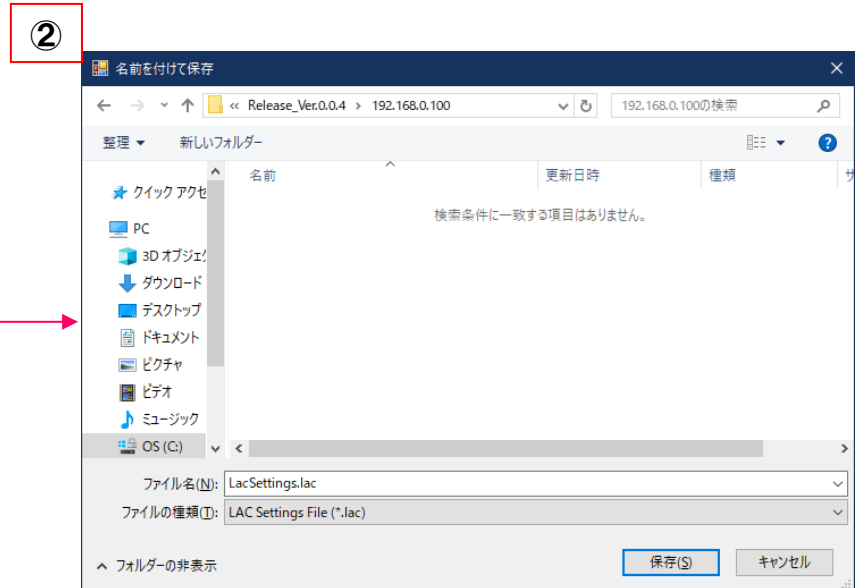
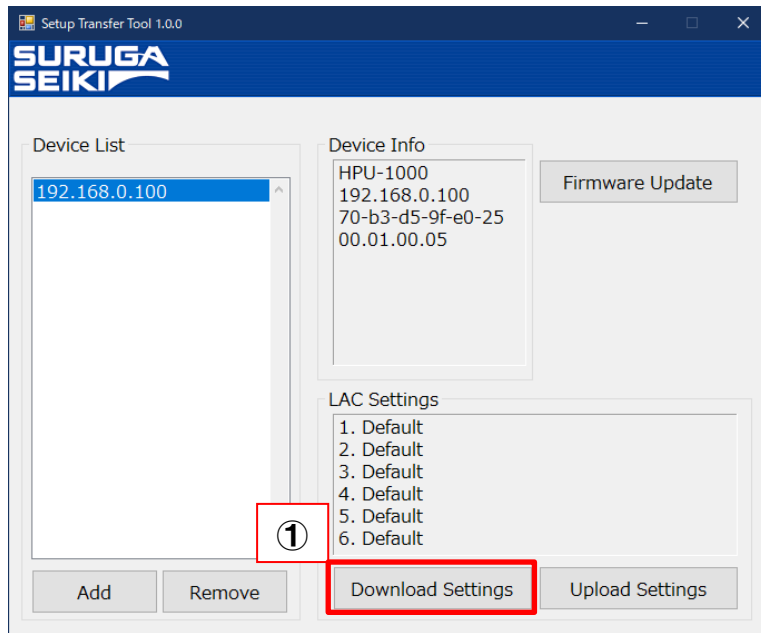
- ① To connect to the device and start communication, select the IP address in the "Device List"
- ② After connecting the device, if communication starts normally, the information will be updated in "Device Info" and "LAC Settings"
- ③ If the device is not connected, "Disconnected" is displayed in "Device Info"

## 9. Tool operating instructions – reconnect device



- ① If you want to reconnect the device or update the information in "Device Info" and "LAC Settings", select the IP address in "Device List" again

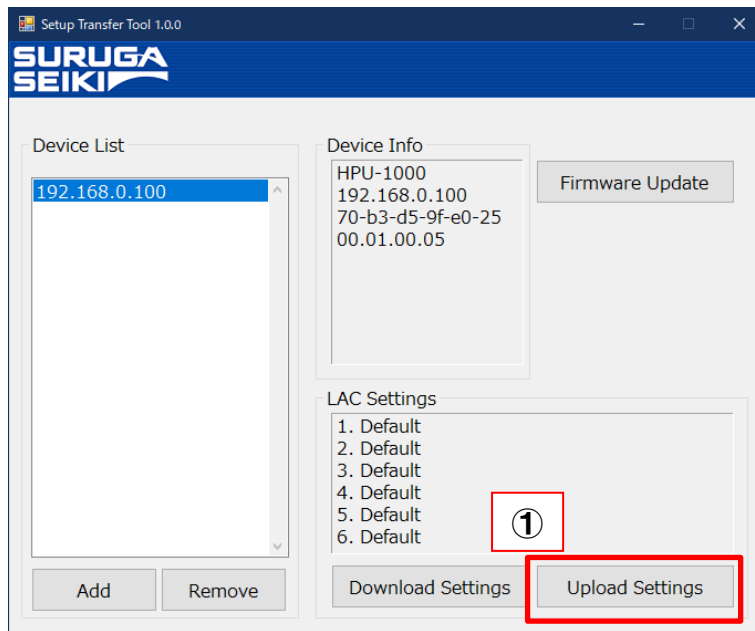
# 10. Tool operating instructions-download configuration file



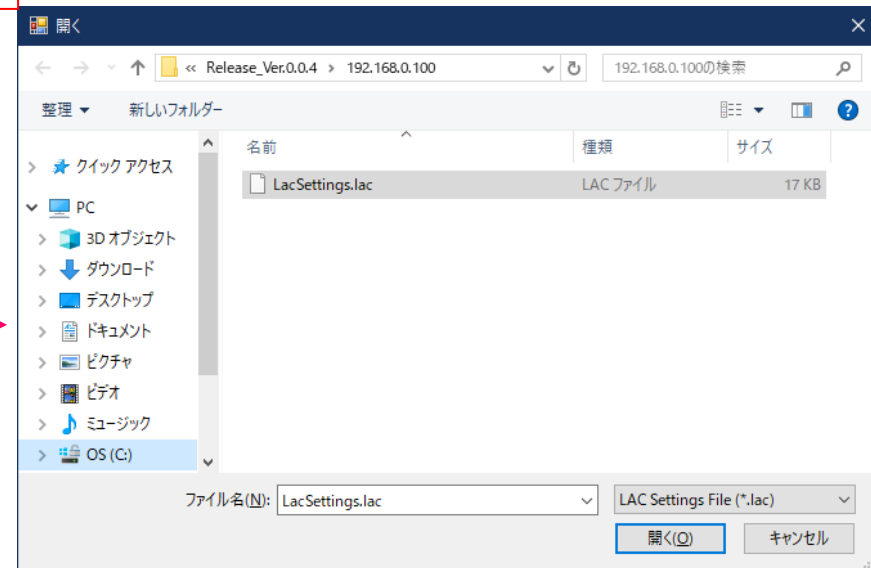
- ① To download the setting file set in the H410 series, click the "Download Settings" button.
  - ② Set the file name with any name and click the "Save (S)" button to save the file in the folder \* with the .lac extension
- ※ A folder is automatically created with the name of the connected Device List



# 11. Tool operating instructions-upload configuration file

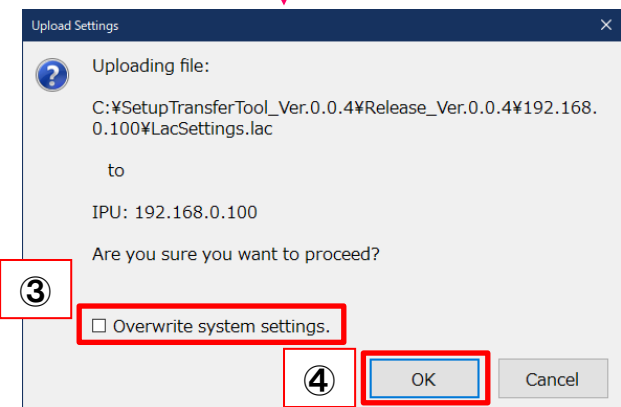


②

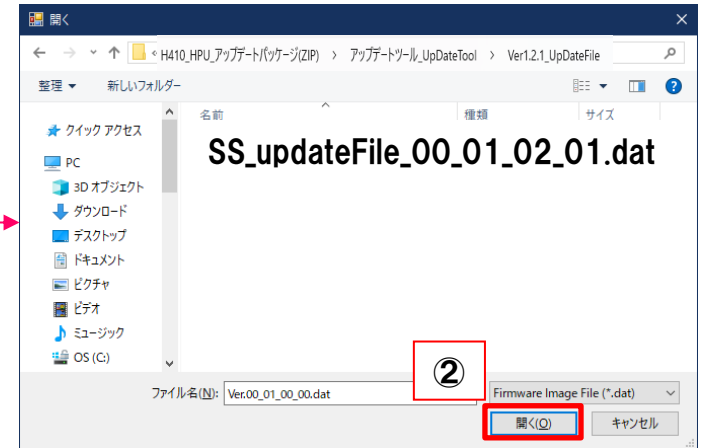
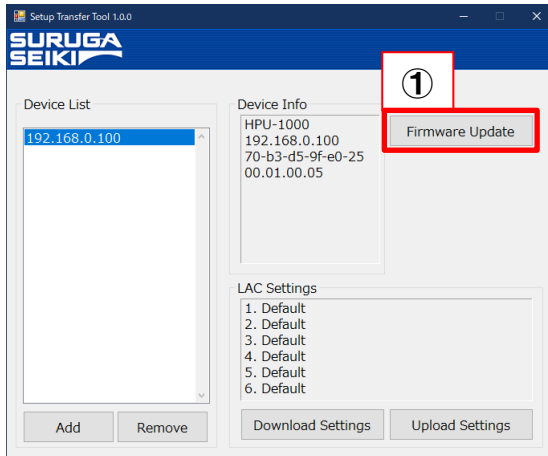


- ① To upload the setting file to the H410 series, click the "Upload Settings" button
- ② Select the .lac extension → click the "Open (O)" button
- ③ will be asked if you want to overwrite the system settings at the same time ✖, so check it if you want to overwrite it
- ④ By clicking the "OK" button, the setting file will be uploaded to the H410 series

✖Other than network related settings (IP address, netmask,gateway)



# 12. Tool Operating Instructions-Firmware Update



**Attention: the firmware (embedded software) for ver1.2.1 update file is in "Ver.1.2.1\_UpDateFile" in the "H410 HPU update package".**

- ① To update the H410 series IPU firmware, click the "Firmware Update" button
- ② Select the .dat extension for firmware update prepared in advance → Click the "Open (O)" button
- ③ A confirmation screen will be displayed. Click the "OK" button to start the firmware update
- ④ When the restart request screen is displayed, click the "OK" button and then restart the H410 series to complete the firmware update

