

Motorized Stage Update

Motorized Linear Stages : KXG06020/KXG06030

There is no price revision due to this change.

XY-axis (KYG06) ,Z-axis(KZG06) and XYZ-axis(KWG06)changes as same as X-axis(KXG06).

Specification changes/Improvements

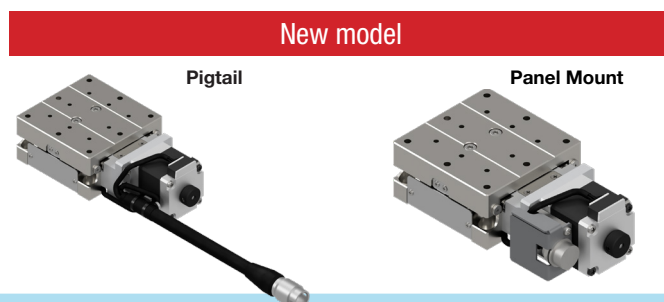
- ① SPEC (Including a change Main materials)
- ② Additional connector option
- ③ Improved sensor board
- ④ Additional holes for positioning pins
- ⑤ Change of sensor cover
- ⑥ Change the position of the Mechanical limit position
- ⑦ Dimensions
- ⑧ Model code system

① SPEC

		Current model		New model			
Mechanical specification	Model	KXG06020-C	KXG06030-C	KXG06020T-C	KXG06020M-C	KXG06030T-C	KXG06030M-C
	Travel distance	20mm	30mm	20mm		30mm	
	Stage surface size	60×60mm	60×70mm	60×60mm		60×70mm	
	Connector type	Pigtail		Pigtail	Panel Mount	Pigtail	Panel Mount
	Feed screw (Ball screw)	φ8 Lead 1		φ8 Lead 1			
Accuracy specification	Guide	Linear Ball Guide		Linear Ball Guide			
	Main materials-Finishing	Stainless - Electroless nickel plating		Special Steel - Electroless nickel plating			
Sensor	Weight	0.78kg	0.9kg	0.72kg	0.71kg	0.82kg	0.81kg
	Resolution	Full/Half	2μm/1μm	2μm/1μm			
		Micro step	0.1μm (1/20 On resolution)	0.1μm (1/20 On resolution)			
	MAX speed	20mm/sec		20mm/sec			
	Uni-directional positioning accuracy	5μm		5μm			
	Repeatability positioning accuracy	±0.5μm		±0.5μm			
	Load capacity	5kgf[49N]		10kgf[98N]			
	Moment stiffness [°/N · cm]	Pitch0.08/Yaw0.05/Roll0.05		Pitch0.08/Yaw0.05/Roll0.05	Pitch0.06/Yaw0.05/Roll0.05		
	Lost motion	1μm		1μm			
	Backlash	1μm		1μm			
Straightness	3μm		3μm				
Parallelism	15μm		15μm				
Motion parallelism	10μm		10μm				
Pitching/Yawing	20"/15"		20"/15"				
Limit sensor	Available		Available				
Origin sensor	Available		Available				
Slit origin sensor	-		-				
Provided screw (Hexagon-headed bolt)	4 of M4-12		4 of M4-10				

※ Might be changed specification due to motors.

② Additional connector option



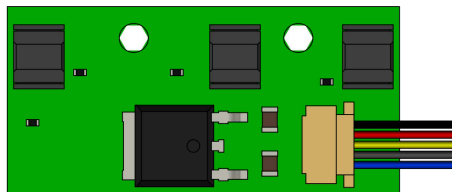
Added panel mount specifications.

You can choose according to the usage situation such as cable routing and installation space.

Motorized Stage Update

Motorized Linear Stages : KXG06020/KXG06030

③ Improved sensor board



Photosensor : EE-SX4320

Power-supply voltage	DC5-24V \pm 10%
Control output (※)	DC5-24V 8mA or less

※ NPN open collector output.

DC5-24V \pm 5%
DC30V 10mA or less

Added following function.

Reverse power supply connection protection, overcurrent protection function on the sensor board

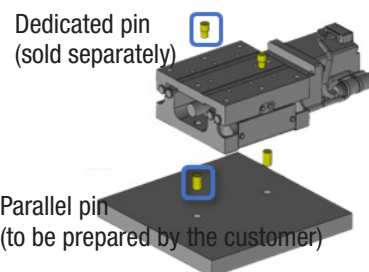
We aim to reduce failures and defects due to incorrect wiring.

④ Additional holes for positioning pins

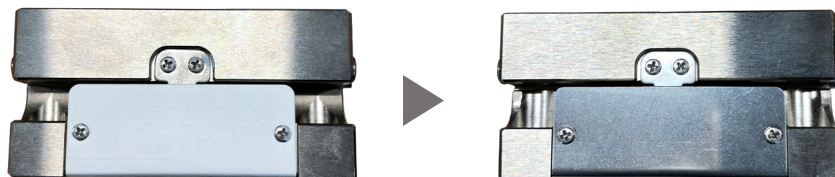
Reproducibility of attachment/detachment has been improved by providing a reference hole for positioning on the linear motion stage body.

The reference hole and reference slotted hole on the base side can be used to attach and detach the stage.

Use the dedicated pin (sold separately) on the table side to attach/detach the workpiece.



⑤ Change of sensor cover

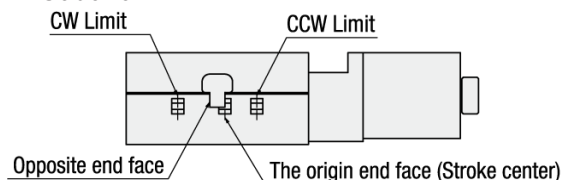


Appearance color changes by changing sensor cover material of linear motion stage.

There is no impact on the specifications, characteristics, performance and quality associated with this change.

⑥ Change the position of the Mechanical limit position

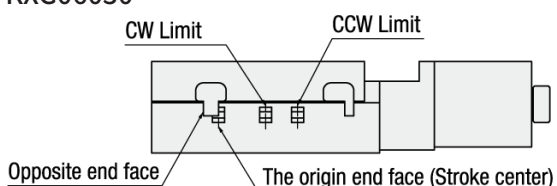
KXG06020



CW Mechanical limit	11
CCW Mechanical limit	13

11.5
11.5

KXG06030



CW Mechanical limit	16
CCW Mechanical limit	18

16.5
16.5

Motorized Stage Update

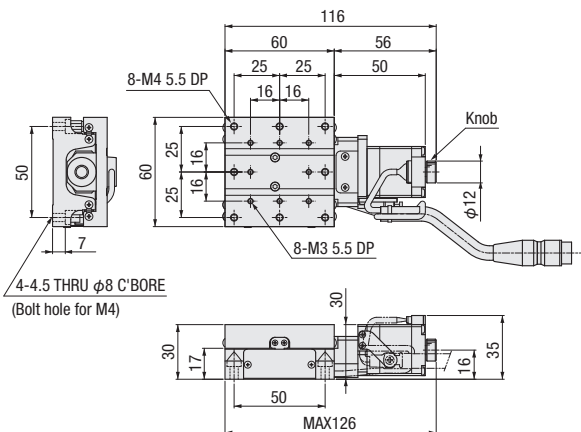
Motorized Linear Stages : KXG06020/KXG06030

⑦ Dimensions

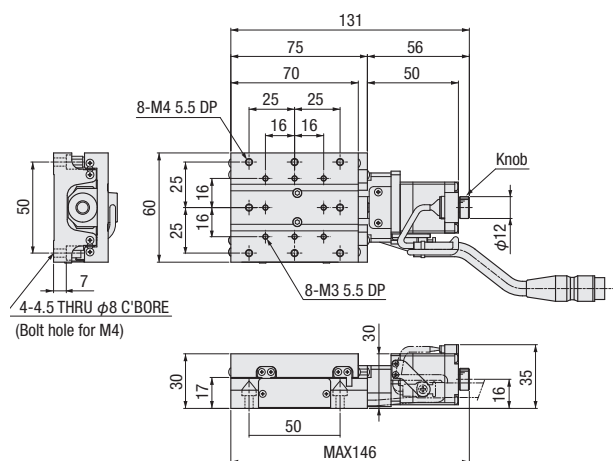
* For dimensions other than those listed (C: standard motor), please contact us for further information .

Current model

KXG06020-C

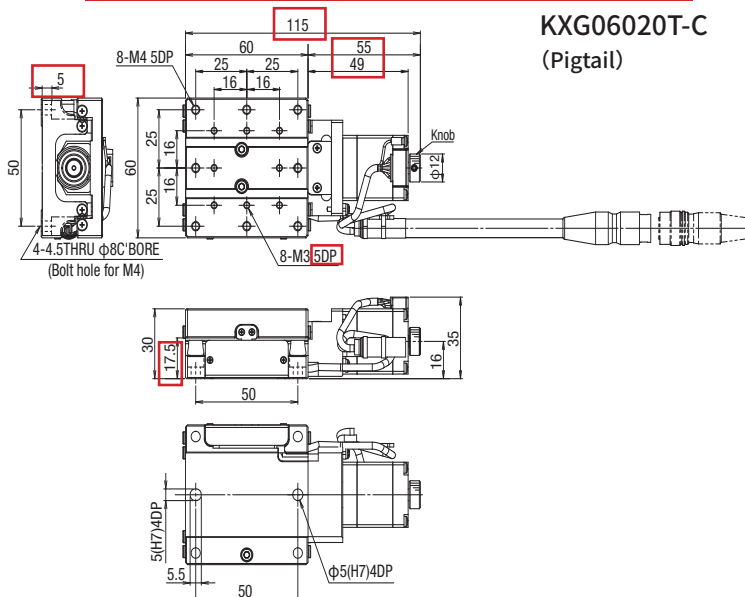


KXG06030-C

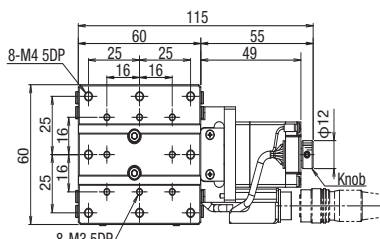


New model

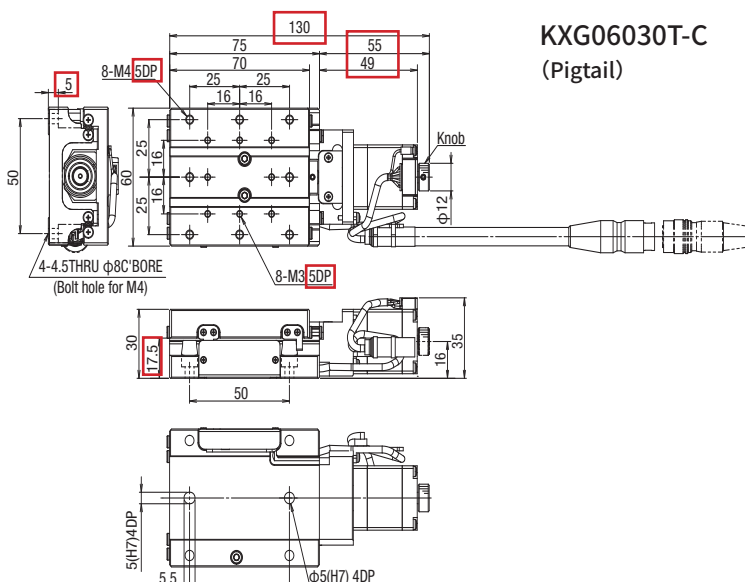
KXG06020T-C
(Pigtail)



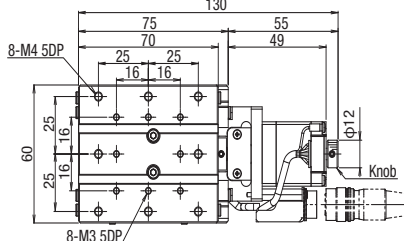
KXG06020M-C
(Panelmount)



KXG06030T-C
(Pigtail)



KXG06030M-C
(Panelmount)



Motorized Stage Update

Motorized Linear Stages : KXG06020/KXG06030

⑧ Model code system

Current model

KXG06 020 - C

1 Travel distance

020	20mm
030	30mm

2 Motor option

Code	Specification
C	Standard
F	High-torque
G	High resolution
MA	With electromagnetic brake (□42_100V)
PA	αSTEP (AR Series)

3 Cable option

Code	Specification
A	2m
B	2m One end loose
C	4m
D	4m One end loose
E	Only connector (Cable is not included)
F	Robot cable 2m
G	Robot cable 2m one end loose
H	Robot cable 4m
J	Robot cable 4m one end loose
M	Cable for electromagnetic brake
P	Cable for α step
Blank	Cable is not included (Standard)

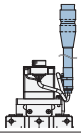

New model

KXG06 020 M - C -

1 Travel distance

020	20mm
030	30mm

2 Connector specifications

T	Pigtail	
M	Panel Mount	

3 Motor option

Code	Specification
C	Standard
F	High-torque
G	High resolution

4 Cable option (Motor: C · F · G)

Code	Specification
Blank	Cable is not included (Standard)
A	2m
B	2m One end loose
C	4m
D	4m One end loose
E	Only connector (Cable is not included)
F	Robot cable 2m
G	Robot cable 2m one end loose
H	Robot cable 4m
J	Robot cable 4m one end loose

3 Motor option

Code	Specification
MA	With electromagnetic brake (□42_100V)
PA	αSTEP (AR Series)

4 Cable option (Motor: MA · PA)

Code	Specification
3A	Driver /Cable set 3m

MA -3A

◆ Example of model code change

- KXG06020 - CA → KXG06020**T** - C - **A**
- KXG06030 - MAM → KXG06030**T** - MA - **3A**

Motorized Stage Update

Motorized Linear Stages : KXG06020/KXG06030

⑧ Model code system

Current model

KXG06020 V - P 28
1

KXG06030 V - P 28
1

New model

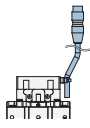
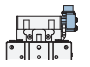
KXG06020 M V - P 28
1 2

KXG06030 M V - P 28
1 2

1 Application Motor

Code	Specification
P28	<input type="checkbox"/> 28 Stepping motor specification
S38	<input type="checkbox"/> 38 Servo motor specification
S40	<input type="checkbox"/> 40 Servo motor specification

1 Connector specifications

T	Pigtail	
M	Panel Mount	

2 Application Motor

Code	Specification
P28	<input type="checkbox"/> 28 Stepping motor specification
S38	<input type="checkbox"/> 38 Servo motor specification
S40	<input type="checkbox"/> 40 Servo motor specification

◆ Example of model code change

• KXG06020V - P28 → KXG06020TV - P28