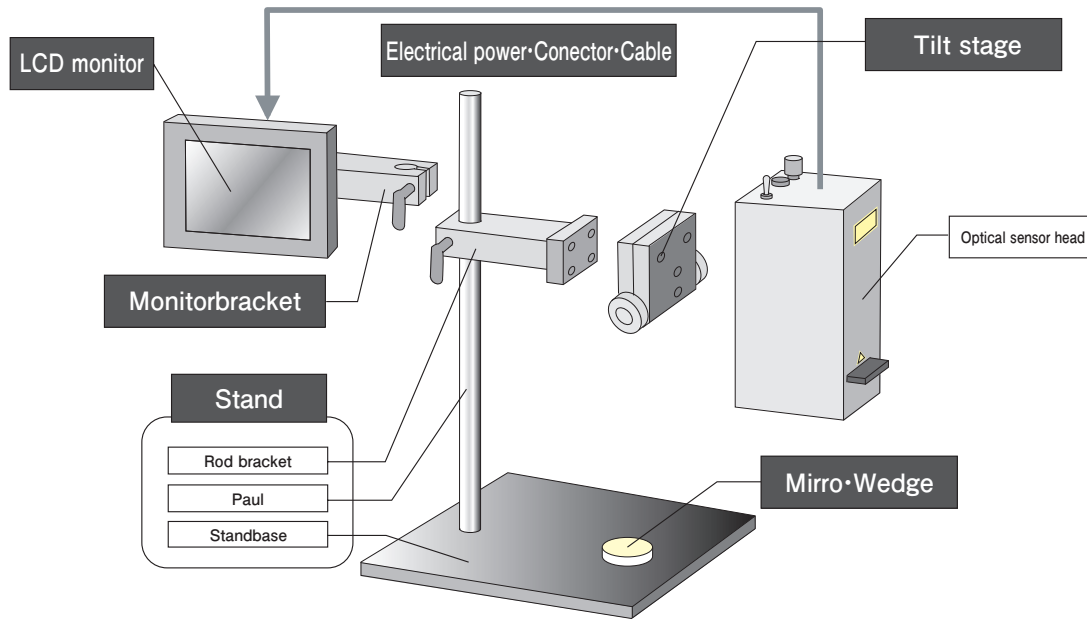


Configuration of The Common Accessory

This is the common accessory for laser autocollimator.



Tilt Stage

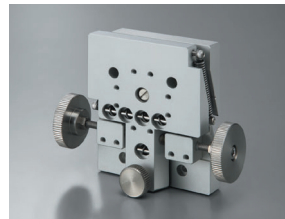
RoHS

This is good for controlling of light axis tilt.

This is useful for 2-axis tilt adjustment and lock mechanism.



HB10



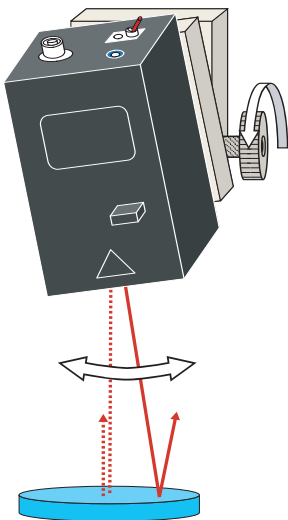
HB11



HB12

	SPEC		
	2-axis small-sized tilt stage	2-axis middle-sized tilt stage	2-axis big-sized tilt stage
Model	HB10	HB11	HB12
Load capacity	1kgf	2kgf	5kgf
Tilt angle	2 degrees	2 degrees	5 degrees
Material - finished	Aluminum-Almite finish, Stainless		
Weight	0.2kg	0.4kg	0.5kg

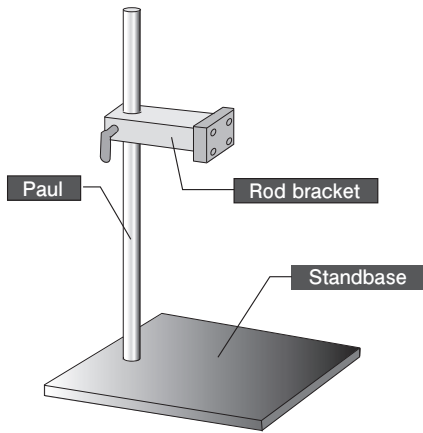
Compatible optical sensor	H410		○
	H900	×	○
	H920	×	○
Compatible stand	HA10	○	×
	HA10L		○
	HA11N	○	×
	HA12S	×	○
	HA12	×	○
	HA12L	×	○
Compatible rod bracket	HA14	○	×
	HB10-RB20	○	×
	HB10-RB38	○	×
	HB12-RB20	×	○
	HB12-RB38	×	○



Stand

RoHS

Can be installed any optical sensors.
 It consists of stand base, pole and rod bracket.



HA10



HA11N



HA12



HA10L



HA12S



HA12L

SPEC							
Model	HA10	HA10L	HA11N	HA12S	HA12	HA12L	HA14
Weight	2.4kg	3.0kg	9.2kg	9.2kg	11.4kg	19.1kg	2.2kg
Compatible tilt stage	HB10	○	○	○	×		○
	HB11	○	○	○	×		×
	HB12	×	○	×	○		×

Configuration

Paul	Model	A42-400		HA11-P38L355		HA12-P38L600		A42-300
	Diameter	φ20 (g6)		φ38 (g6)		φ38 (g6)		φ20 (g6)
	Length	L=400mm		L=355mm		L=600mm		L=300mm
	Material	Stainless						
Stand base	Model	HA10-BASE	HA10L-BASE	HA11N-BASE		HA12L-BASE	HA14L-BASE	
	Size	W200×D250	W200×D350	W200×D250		W280×D412		
	Material - finished	Aluminum-Almite finish		S45C electroless nickel plating			Aluminum-Almite finish	
Rod bracket	Model	HB10-RB20	HB10-RB20 (With plate)	HB10-RB38	HB12-RB38		HB10-RB20	

Rod Bracket

RoHS

The rod bracket for installation tilt stage to the pole. There are two kinds of radius φ20 and φ38. Also available 2kinds of tilt stages for HB10 and HB12.(A rod bracket is included in a stand)



HB10-RB20



HB10-RB38



HB12-RB20



HB12-RB38

SPEC				
Model	φ20 Rod bracket	φ38 Rod bracket	φ20 Rod bracket	φ38 Rod bracket
	HB10-RB20	HB10-RB38	HB12-RB20	HB12-RB38
Material - finished	Aluminum-Almite finish, Resin			
Weight	0.1kg	0.2kg	0.2kg	0.3kg
Compatible pole diameter	φ20 (g6)	φ38 (g6)	φ20 (g6)	φ38 (g6)
Compatible tilt stage	HB10	○		×
	HB11	○		×
	HB12	×		○

Angle measurement

Laser autocollimator

High speed·High resolution

Standard

Accessories

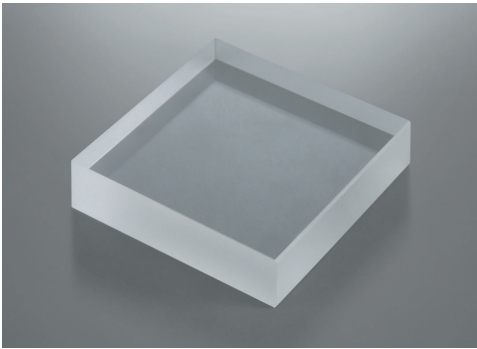
Mirror

For setting an optical sensor in vertically on the reference face.



SPEC	
	Parallel mirror
Model	HS-0
Material	BK7
External dimension	$\phi 30 + 0 / - 0.1 \text{ mm}$
Thickness	$10 \pm 0.1 \text{ mm}$
Parallelization	Less than 5 seconds
Surface accuracy	Duplex reflective wavefront $\lambda/10$
Polishing effective diameter	Center over $\phi 27 \text{ mm}$ circle
film forming specification	Dielectric multilayer film
Incident angle	$\theta = 0^\circ$
Reflectance	$R_{650 \pm 20 \text{ nm}} \geq 99\%$
Film effective diameter	Center over $\phi 28 \text{ mm}$ circle

Wedge Substrate/Wedge Mirror



Wedge substrate

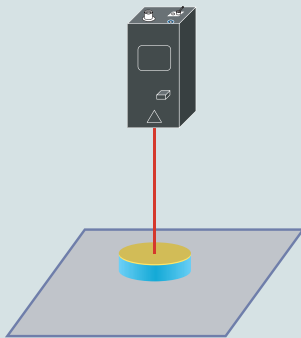


Wedge mirror

Wedge substrate and Wedge mirror with micro angle.

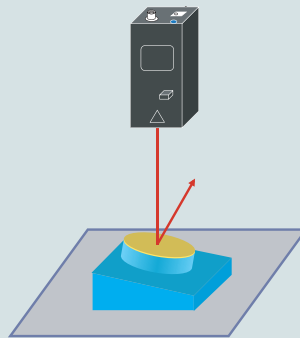
SPEC		
	Wedge substrate	Wedge mirror
Material	BK7	BK7
External dimension	$40 \pm 0.1 \times 40 \pm 0.1 \text{ mm}$	$40 \pm 0.1 \times 40 \pm 0.1 \text{ mm}$
Thickness	10mm	10mm
Wedge tolerance	± 10 seconds	± 10 seconds
Surface accuracy	Duplex reflective wavefront $\lambda/4$	Duplex reflective wavefront $\lambda/4$
Surface accuracy measurement wave length	$\lambda = 632.8 \text{ nm}$	$\lambda = 632.8 \text{ nm}$
Polishing effective diameter	Center over $\phi 36 \text{ mm}$ circle	Center over $\phi 36 \text{ mm}$ circle
Film forming specification	N/A	AL + MgF2

	Wedge substrate	Wedge mirror
Angle	Model	Model
1 degree	HS-100	HS-100AL
0.5 degrees	HS-050	HS-050AL
0.25 degrees	HS-025	HS-025AL
0.2 degrees	HS-020	HS-020AL
0.1 degrees	HS-010	HS-010AL



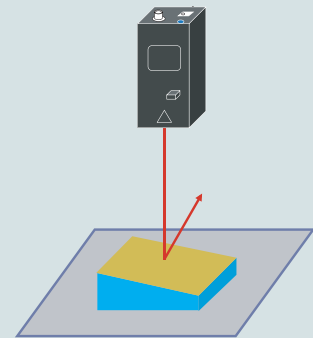
【Parallel mirror】

Set it so that an optical axis becomes vertical to a datum level.



【Wedge substrate】

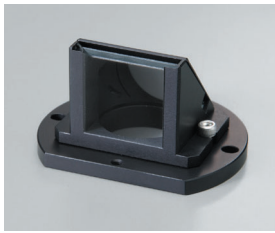
Use for processing unit calibration. When you use the wedge board, please use a parallel mirror in the top.



【Wedge mirror】

Use for processing unit calibration. You don't need to put the parallel mirror on it.

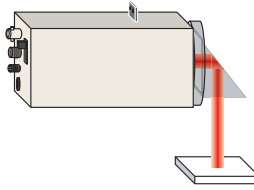
Beam Split • 90 Degree Folded Adaptor



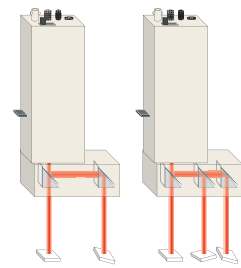
90 degree folded adaptor



3 beam split adaptor



Folded 90 degree optical axis of autocollimator



Multi spot measurement is available with splitting an optical axis 2 or 3.

Product name	Model	Weight	Remark
90 degree folded adaptor	HT-90	0.04kg	Folded 90 degree optical axis of autocollimator. ※ 1 ※ 3
2 beam split adaptor	HT-20	0.24kg	Split two the autocollimator beam ※ 2 ※ 3
3 beam split adaptor	HT-30	0.25kg	Split three the autocollimator beam ※ 2 ※ 3

※ 1 Adaptor plate is needed to mount Sensor Head (H410-HTP).

※ 2 Beam Spacing Min14mm, Max 55.5mm.

※ 3 Each beam power may change by adaptor mounting condition.

