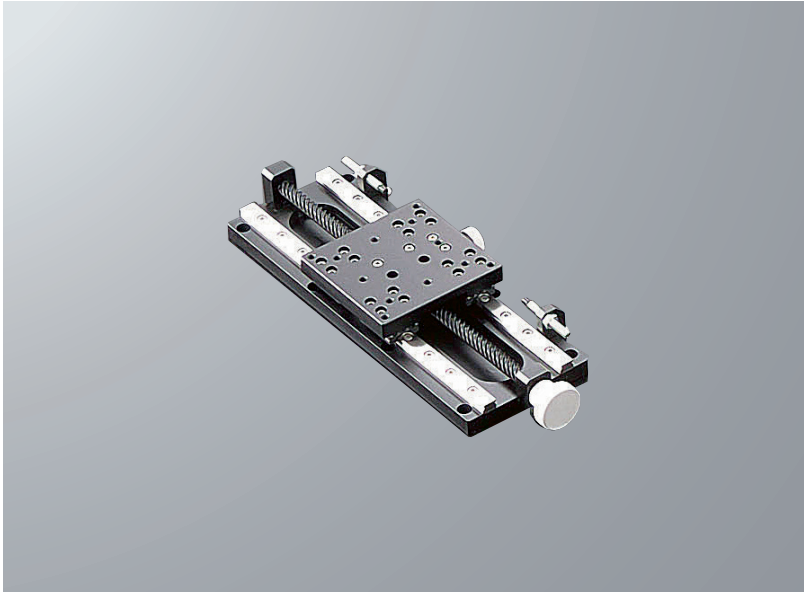


X-axis Long Stroke Slide Guide Stage □80: B15-150

B15-150

RoHS



- Long stroke stage.
- Optimal control system for heavy weight, big size and optical system.
- Adjustable travel distance by changing a stopper position on the side.

Manual linear stage

X

XY

Z

Horizontal Z

XZ

Horizontal XZ

XYZ

Horizontal XYZ

Goniometer

Rotary

Unit

Accessories

Linear Ball

Cross Roller

Dovetail

□25

□30

□40

□50

□60

□70

□80

□100

□120

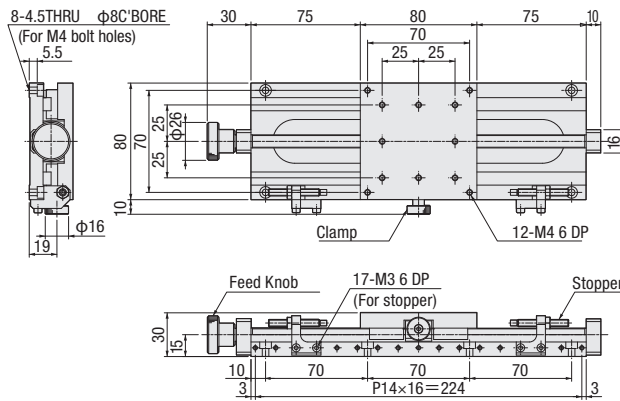
Other

SPEC

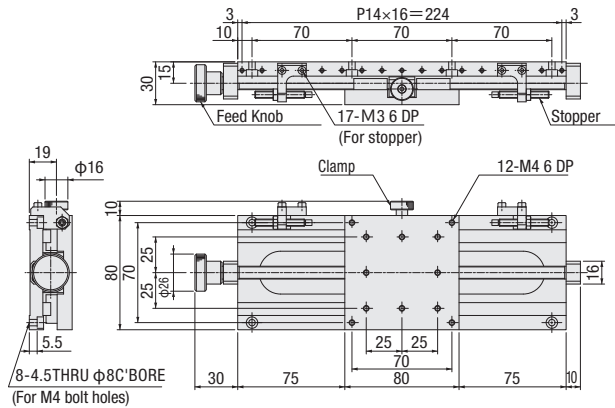
		SPEC
Model		B15-150
(Opposite hand)		B15-150R
Stage table size		80×80 mm
Travel distance		128 mm
Travel distance per rotation of knob		24 mm
Guide		Slide guide
Load capacity		15 kgf [147N]
Travel accuracy	Straightness	—
Allowable load for moment	Pitch	10.6N · m
	Yaw	7.5N · m
	Roll	11.5N · m
Parallelism		50 μm
Motion parallelism		25 μm
Weight		0.9 kg
Main material—Surface finishing		Aluminum—Black alumite processing
Provided screws (Hex socket screws)		8 of M4—10

Dimensional outline drawings

B15-150



B15-150R



Slide guide stage

X

XY

Z

Horizontal Z

XZ

Horizontal XZ

XYZ

Horizontal XYZ

Goniometer

Rotary

Unit

Accessories

Linear Ball

Cross Roller

Dovetail

25

30

40

50

60

70

80

100

120

Other

2

092

Z-axis Mount: B34 (140×200)

Z axis mount

RoHS

B34



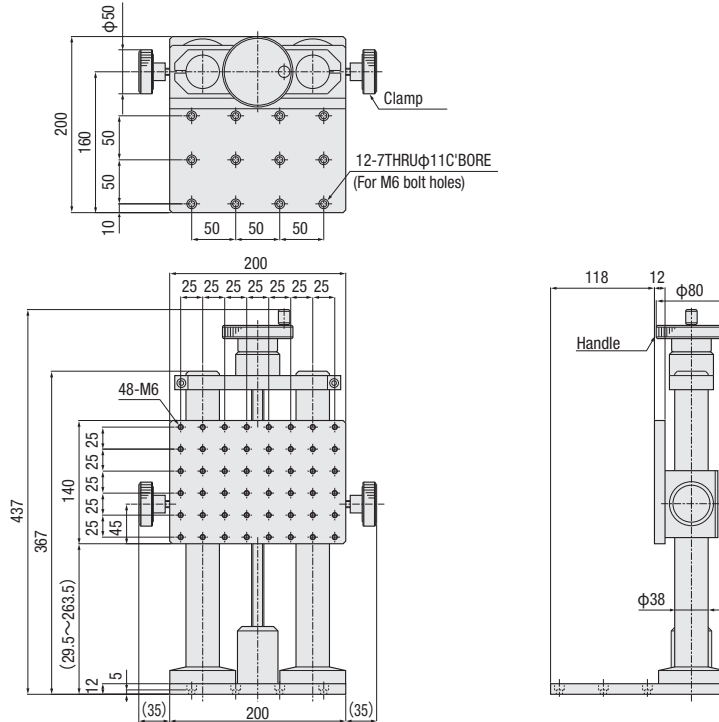
B34-N



- Optimal control system for heavy weight.
- 3mm per handle rotation.
- B34 has anti-vibration mechanism with special rod.

Dimensional outline drawings

B34



SPEC		
Model	B34	B34-N
Stage table size	140×200 mm	
Travel distance	234 mm	
Travel distance per rotation of knob	3 mm	
Guide	Shaft	
Load capacity	15.0 kgf [147N]	
Weight	10.3 kg	11.3 kg
Anti-vibration function	With anti-vibration function	Without anti-vibration function
Main material—Surface finishing	Aluminum—Black alumite processing	
Provided screws (Hex socket screws)	6 of M6—12	

X

XY

Z

Horizontal Z

XZ

Horizontal XZ

XYZ

Horizontal XYZ

Goniometer

Rotary

Unit

Accessories

Linear Ball

Cross Roller

Dovetail

25

30

40

50

60

70

80

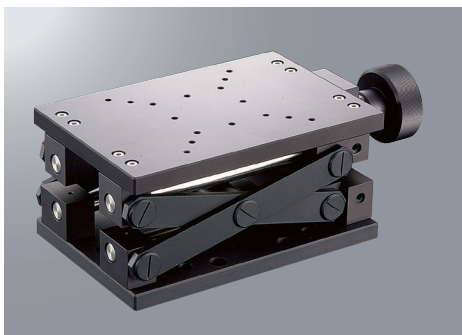
100

120

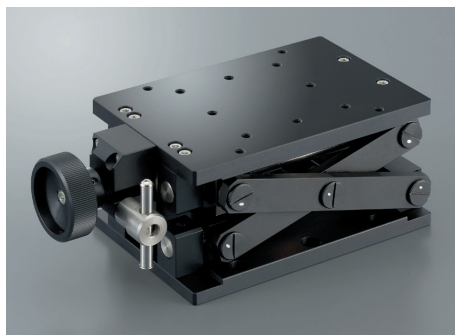
Other

Laboratory Jack: B35 (120×180/80×120)

B35



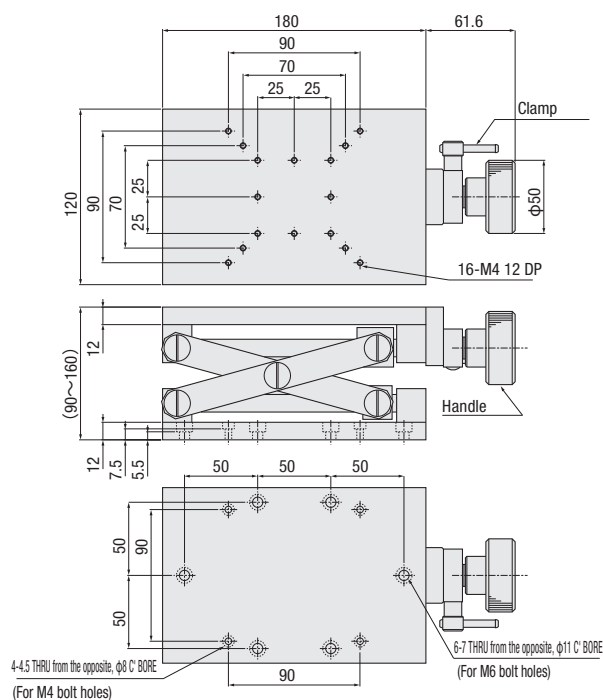
B35-N



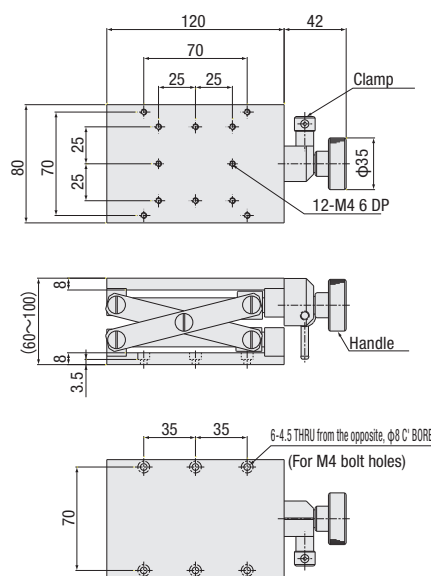
- Optimal control system for heavy weight.
- Approx. 3mm~5mm per handle rotation
- Can be fixed strongly by a clamp.

Dimensional outline drawings

B35



B35-N



*On the structure of the product, it will vary the amount of movement by the position of the table.

Model	From the bottom to the top	From the top to the bottom
B35	Approx. 7.3mm	Approx. 3.4mm
B35-N	Approx. 4.2mm	Approx. 2.2mm

Model	SPEC	
	B35	B35-N
Stage table size	120×180 mm	80×120 mm
Travel distance	70 mm	40 mm
Travel distance per rotation of knob	Approx. 5 mm	Approx. 3 mm
Load capacity	10.0 kgf [98N]	7.0 kgf [68.6N]
Parallelism	200μm	200μm
Weight	3.5 kg	1.25 kg
Main material—Surface finishing	Aluminum—Black alumite processing	
Provided screws (Hex socket screws)	4 of M4—12, 4 of M6—12	4 of M4—10

Lab Jack

X

XY

Z

Horizontal Z

XZ

Horizontal XZ

XYZ

Horizontal XYZ

Goniometer

Rotary

Unit

Accessories

Linear Ball

Cross Roller

Dovetail

25

30

40

50

60

70

80

100

120

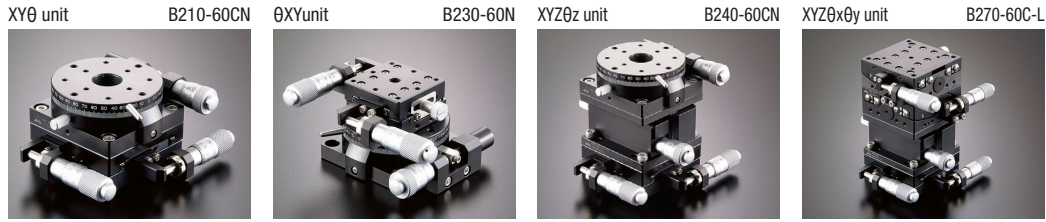
Other

2

094

Multi-axis Stage Unit

■ There are variety of stage unit.
It is easy to select.



RoHS

Manual stage unit

X

XY

Z

Horizontal Z

XZ

Horizontal XZ

XYZ

Horizontal XYZ

Goniometer

Rotary

Unit

Accessories

SPEC														
NO.	Axis	Model	Load capacity (kgf [N])	Top Table surface Size (mm)	Mounted on lower surface Size (mm)	External dimension (mm)			Center of rotation High(mm)	Unit				
						W	D	H		XY	Z	θx	θy	θz
1	3	B210-40CN	0.9 [8.8]	φ38	32×32	98.5	80.9	42	—	B23-40C P.2-073~	—	—	—	B43-38N P.2-171~
2		B210-60CN	2.7 [26.4]	φ60	50×50	102.5	97.9	47	—	B23-60C P.2-073~	—	—	—	B43-60N P.2-171~
3		B210-80CN	3.5 [34.3]	φ85	70×70	151	131.7	47	—	B23-80C P.2-075~	—	—	—	B43-85N P.2-171~
4		B210-100CN	3.5 [34.3]	φ100	90×90	152.5	151.7	42	—	B23-100C P.2-075~	—	—	—	B47-100AN P.2-173
5		B220-100CN	6.0 [58.8]	φ100	90×90	161	151.7	50	—	B27-100C P.2-077~	—	—	—	B47-100AN P.2-173
6		B230-38N	0.9 [8.8]	25×25	32×32	68.2	73.9	50	—	B21-25CN P.2-069~	—	—	—	B43-38N P.2-171~
7		B230-60N	1.0 [9.8]	40×40	50×50	98.5	91.9	47	—	B23-40C P.2-073~	—	—	—	B43-60N P.2-171~
8	4	B240-40AN	0.7 [6.8]	φ38	32×32	112.2	116.8	82	—	B23-40A P.2-073~	B33-40A P.2-082	—	—	B43-38N P.2-171~
9		B240-60AN	1.7 [16.6]	φ60	50×50	133.5	135.5	87	—	B23-60A P.2-073~	B33-60A P.2-082	—	—	B43-60N P.2-171~
10		B240-80AN	2.3 [22.5]	φ85	70×70	206.5	195.7	102	—	B23-80A P.2-075~	B33-80A P.2-083	—	—	B43-85N P.2-171~
11		B240-40CN	0.7 [6.8]	φ38	32×32	98.5	95.8	82	—	B23-40C P.2-073~	B33-40A P.2-082	—	—	B43-38N P.2-171~
12		B240-60CN	1.7 [16.6]	φ60	50×50	102.5	103.3	87	—	B23-60C P.2-073~	B33-60A P.2-082	—	—	B43-60N P.2-171~
13		B240-80CN	2.3 [22.5]	φ85	70×70	151	137.7	102	—	B23-80C P.2-075~	B33-80A P.2-083	—	—	B43-85N P.2-171~
14	5	B250-40C-L	0.3 [2.9]	40×40	32×32	98.5	96	97	25	B23-40C P.2-073~	B33-40A P.2-082	B54-40U2N P.2-141~	B54-40UN P.2-141~	—
15		B250-40C-W	0.2 [1.9]	40×40	32×32	98.5	96	102	40	B23-40C P.2-073~	B33-40A P.2-082	B54-40UN P.2-141~	B54-40LN P.2-141~	—
16		B250-60C-L	0.76 [7.4]	60×60	50×50	102.5	103	107	35	B23-60C P.2-073~	B33-60A P.2-082	B54-60U2N P.2-145~	B54-60UN P.2-145~	—
17		B250-60C-W	0.9 [8.8]	60×60	50×50	102.5	103	102	60	B23-60C P.2-073~	B33-60A P.2-082	B54-60UN P.2-145~	B54-60LN P.2-145~	—
18		B270-40C-L	0.5 [4.9]	40×40	32×32	100.5	96.5	102	40	B23-40C P.2-073~	B33-40A P.2-082	B58-40UC P.2-159~	B58-40LC P.2-159~	—
19		B270-40C-W	0.5 [4.9]	40×40	32×32	100.5	96.5	102	60	B23-40C P.2-073~	B33-40A P.2-082	B58-40LC P.2-159~	B58-40WLC P.2-159~	—
20		B270-60C-L	1.4 [13.7]	60×60	50×50	113.5	109	112	50	B23-60C P.2-073~	B33-60A P.2-082	B58-60UC P.2-163~	B58-60LC P.2-163~	—
21		B270-60C-W	1.4 [13.7]	60×60	50×50	113.5	109	112	75	B23-60C P.2-073~	B33-60A P.2-082	B58-60LC P.2-163~	B58-60WLC P.2-163~	—
22	B270-60C-T	1.4 [13.7]	60×60	50×50	113.5	109	112	100	B23-60C P.2-073~	B33-60A P.2-082	B58-60WLC P.2-163~	B58-60TLC P.2-163~	—	

※Size might be changed due to micrometer travel range.

Please feel free to contact us

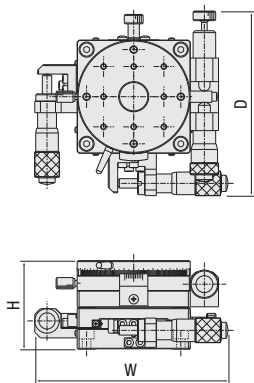
TEL: + 81-6403-4513

FAX: +81-6403-4514

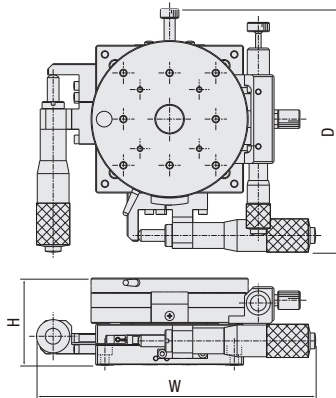
E-Mail: e-ost@suruga-g.co.jp

Dimensional outline drawings

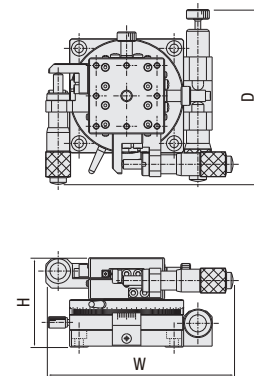
■ B210 series (B210-40/60CN)



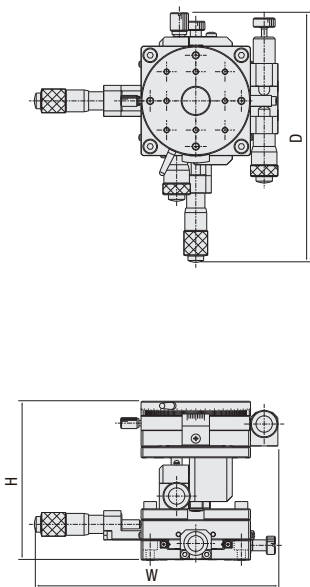
■ B210,220 series (B210-80/100CN/B220-100CN)



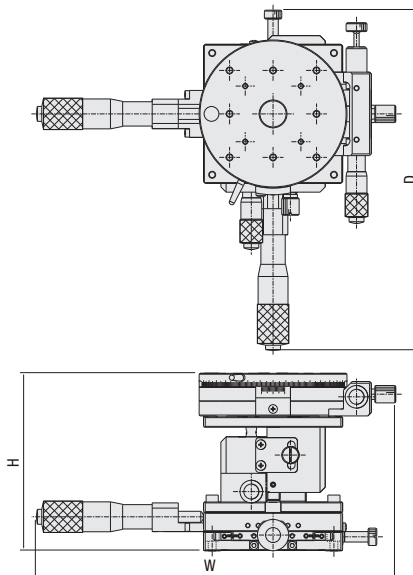
■ B230 series (B230-38/60CN)



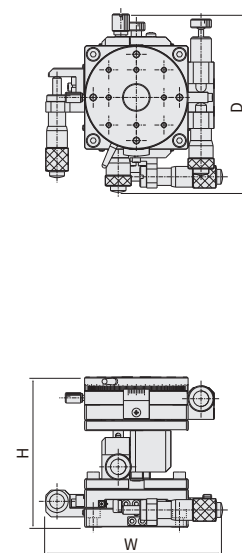
■ B240 series (B240-40/60AN)



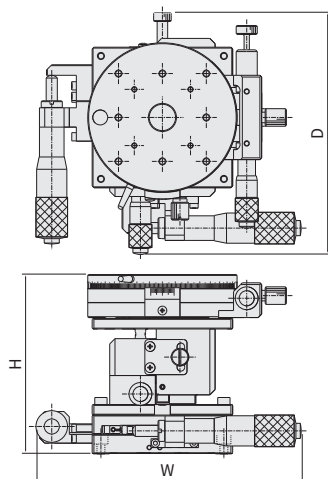
■ B240 series (B240-80AN)



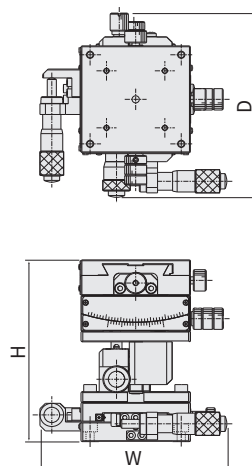
■ B240 series (B240-40/60CN)



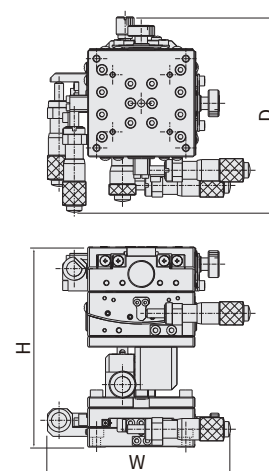
■ B240 series (B240-80CN)



■ B250 series (B250-60C-□)



■ B270 series (B270-60C-□)



Manual stage unit

X

XY

Z

Horizontal Z

XZ

Horizontal XZ

XYZ

Horizontal XYZ

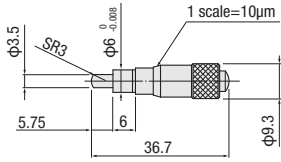
Goniometer

Rotary

Unit

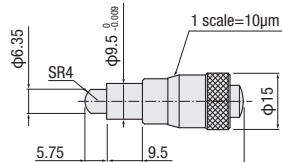
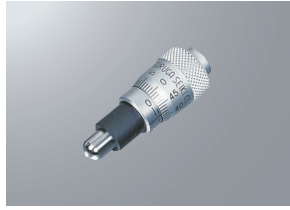
Accessories

■ Micrometer head
B80-1



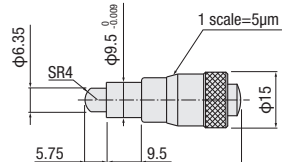
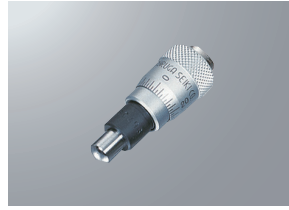
Stroke (mm)	±3.25
Minimum scale (mm)	0.01
Screw pitch (mm/1 rotation)	0.5
Weight (kg)	0.01

■ Micrometer head
B80-2



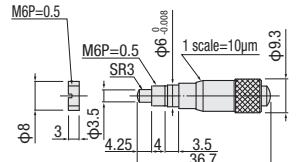
Stroke (mm)	±3.25
Minimum scale (mm)	0.01
Screw pitch (mm/1 rotation)	0.5
Weight (kg)	0.03

■ Micrometer head
B80-3



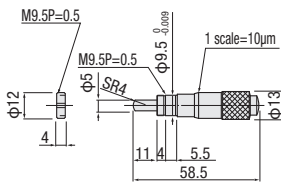
Stroke (mm)	±3.25
Minimum scale (mm)	0.005
Screw pitch (mm/1 rotation)	0.25
Weight (kg)	0.03

■ Micrometer head
B80-4



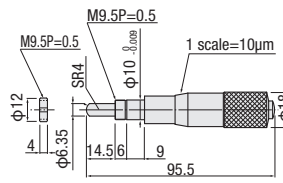
Stroke (mm)	±3.25
Minimum scale (mm)	0.01
Screw pitch (mm/1 rotation)	0.5
Weight (kg)	0.01

■ Micrometer head
B81-2



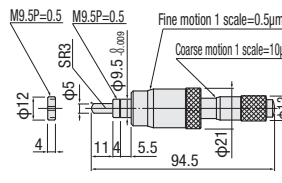
Stroke (mm)	±6.5
Minimum scale (mm)	0.01
Screw pitch (mm/1 rotation)	0.5
Weight (kg)	0.03

■ Micrometer head
B82-1



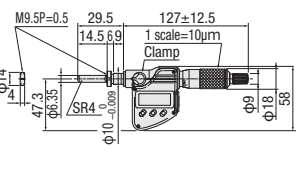
Stroke (mm)	±12.5
Minimum scale (mm)	0.01
Screw pitch (mm/1 rotation)	0.5
Weight (kg)	0.09

■ Coarse-fine micrometer
B83-1



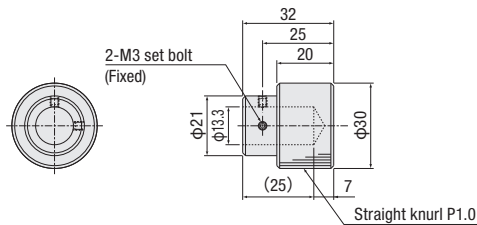
Stroke	Rough (mm)	±6.5
	micromotion (mm)	0.2
Minimum scale	Rough (mm)	0.01
	micromotion (mm)	0.0005
Screw pitch (mm/1 rotation)		0.5
Weight (kg)		0.1

■ Degimatic micrometer
B84-1



Stroke (mm)	0~25
Minimum (mm)	0.001
Micrometer scale(mm)	0.01
Difference (μm)	±2
Screw pitch (mm/1 rotation)	0.5
Weight (kg)	0.235

■ Micrometer knob
B90-1

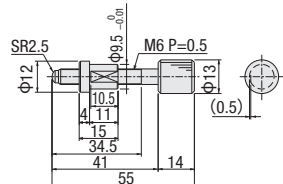


Attachable on φ13mm micrometer. Made by resin.
Improvement operation depending on mounting 30mm micrometer. It can be supported long time operation.

Feeding Screw

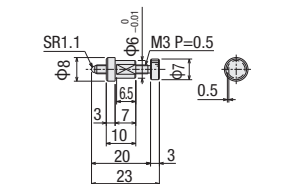
RoHS

Feeding screw
B85-1



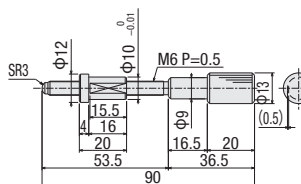
Stroke (mm)	±6.5
Screw pitch (mm/1 rotation)	0.5
Weight (kg)	0.03

Feeding screw
B85-2



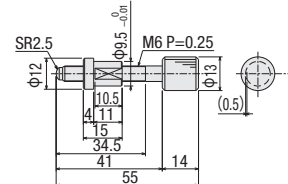
Stroke (mm)	±3.2
Screw pitch (mm/1 rotation)	0.5
Weight (kg)	0.005

Feeding screw
B85-3



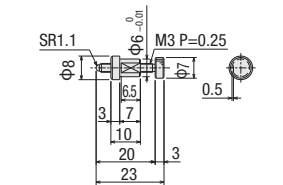
Stroke (mm)	±12.5
Screw pitch (mm/1 rotation)	0.5
Weight (kg)	0.05

Feeding screw (Fine pitch)
B86-1



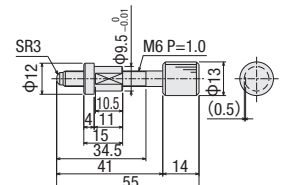
Stroke (mm)	±6.5
Screw pitch (mm/1 rotation)	0.25
Weight (kg)	0.03

Feeding screw (Fine pitch)
B86-2



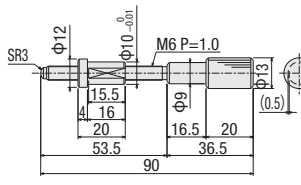
Stroke (mm)	±3.2
Screw pitch (mm/1 rotation)	0.25
Weight (kg)	0.005

Feeding screw (Long pitch)
B87-1



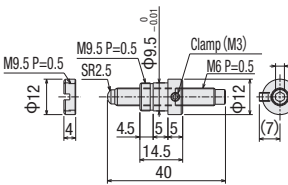
Stroke (mm)	±6.5
Screw pitch (mm/1 rotation)	1.0
Weight (kg)	0.03

Feeding screw (Long pitch)
B87-3



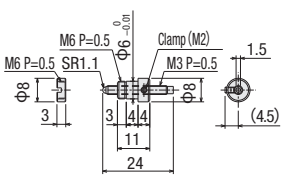
Stroke (mm)	±12.5
Screw pitch (mm/1 rotation)	1.0
Weight (kg)	0.05

Feeding screw (Handled by hex wrench)
B88-1



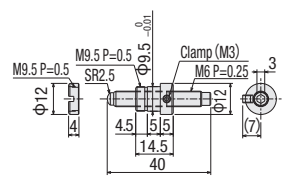
Stroke (mm)	±6.5
Screw pitch (mm/1 rotation)	0.5
Weight (kg)	0.015

Feeding screw
(Handled by hex wrench)
B88-2



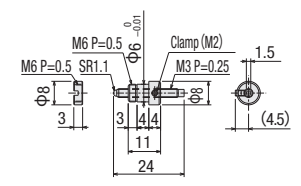
Stroke (mm)	±3.2
Screw pitch (mm/1 rotation)	0.5
Weight (kg)	0.005

Feeding screw
(Fine pitch: Handled by hex wrench)
B89-1



Stroke (mm)	±6.5
Screw pitch (mm/1 rotation)	0.25
Weight (kg)	0.015

Feeding screw
(Fine pitch: Handled by hex wrench)
B89-2

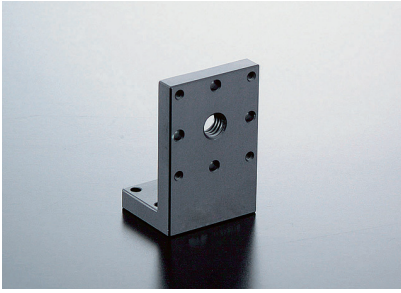


Stroke (mm)	±3.2
Screw pitch (mm/1 rotation)	0.25
Weight (kg)	0.005

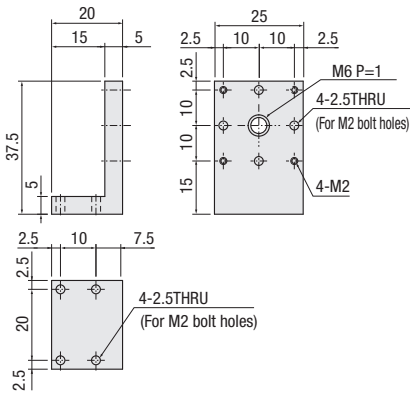
Accessories

- X
- XY
- Z
- Horizontal Z
- XZ
- Horizontal XZ
- XYZ
- Horizontal XYZ
- Goniometer
- Rotary
- Unit
- Accessories

■ Z-axis Bracket
A47-1N



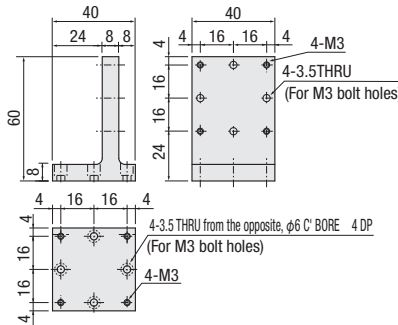
Z-axis bracket for □25mm stage.



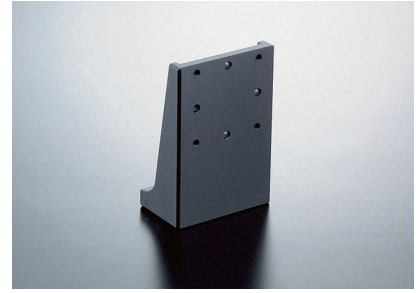
■ Z-axis Bracket
A47-2



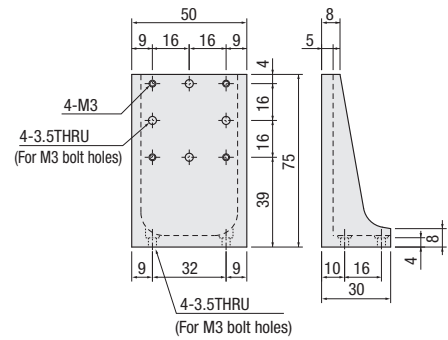
Z-axis bracket for □40mm linear stage. Attachable each bracket surface.



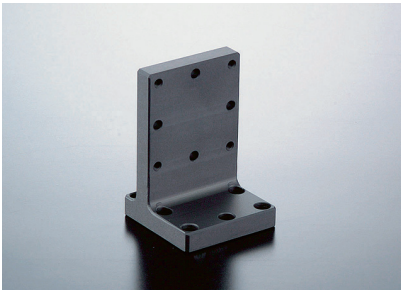
■ Z-axis Bracket
A47-4



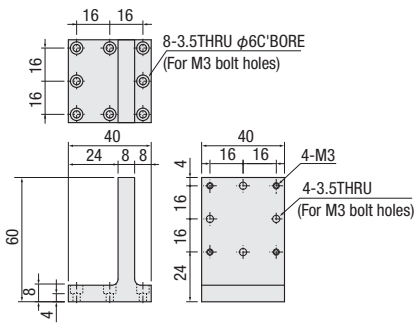
Z-axis bracket for □40mm linear stage.



■ Z-axis Bracket
A47-106



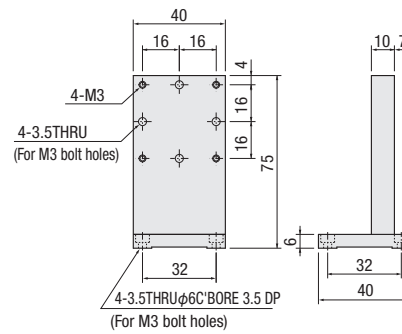
Z-axis bracket for □40mm stage.



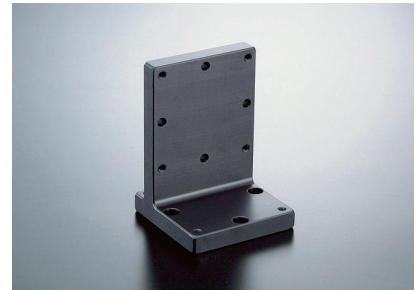
■ Stainless Z-axis Bracket
AS47-2



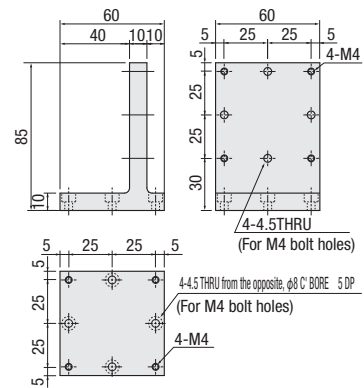
Z-axis bracket for □40mm linear stage. Attachable each bracket surface.



■ Z-axis Bracket
A47-3

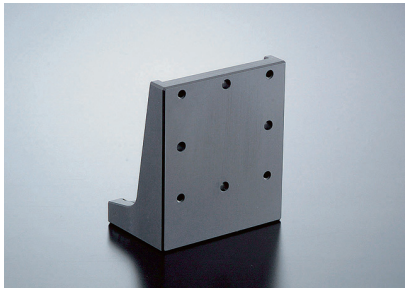


Z-axis bracket for □60mm linear stage. Attachable each bracket surface.

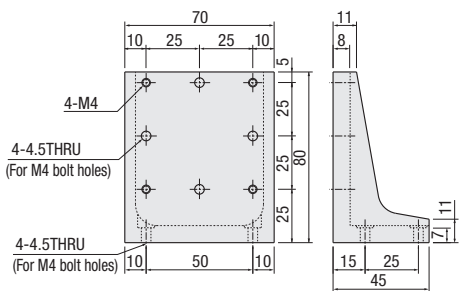


SPEC						
Model	A47-1N	A47-2	A47-4	A47-106	AS47-2	A47-3
Main material	Aluminum	Aluminum	Aluminum	Aluminum	Stainless	Aluminum
Surface finishing	Black alumite processing	Black alumite processing	Black alumite processing	Black alumite processing		Black alumite processing
Weight	0.02kg	0.07kg	0.08kg	0.07kg	0.3kg	0.2kg
Provided screws (Hex socket screws)	4 of M2—8	4 of M3—8	4 of M3—8	4 of M3—8	4 of M3—6	4 of M4—10

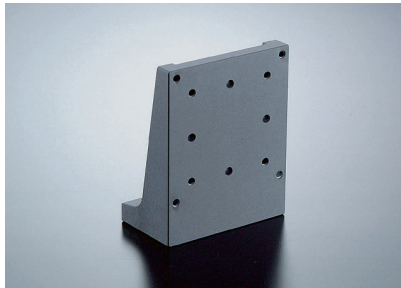
■ Z-axis Bracket A47-5



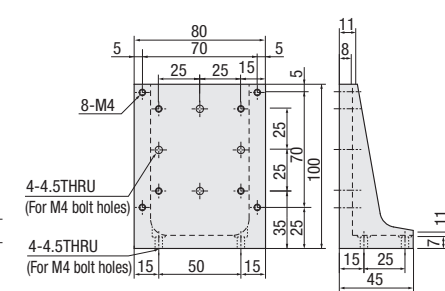
Z-axis bracket for □60mm linear stage.



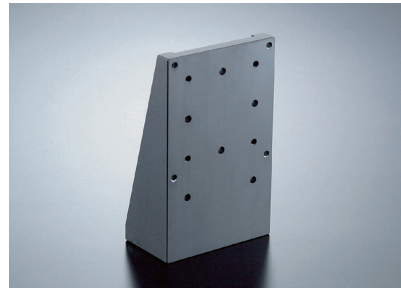
■ Z-axis Bracket A47-6/ASS80Z-1



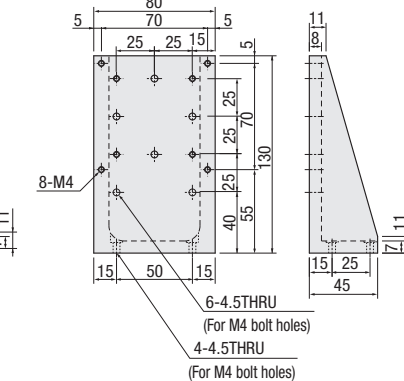
For □80mm stage.
 A47-6: BSB16/For B11-80
 ASS80Z-1: For BSS16-80



■ Z-axis Bracket A47-7



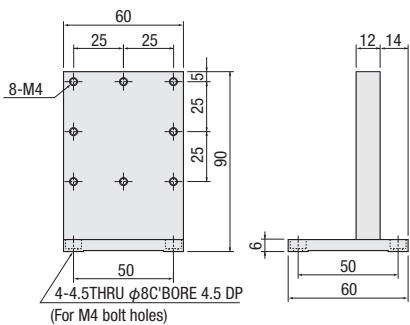
It becomes Z-axis stage using □80mm side pushing, coarse motion micrometer and long stroke type (B12-60A,B),



■ Stainless Z-axis Bracket AS47-3



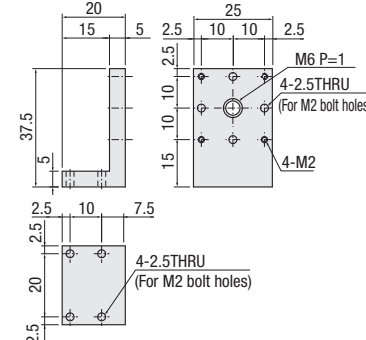
Z-axis bracket for □60mm linear stage. Attachable each bracket surface.



■ Z-axis Bracket ASS25Z-1/ASB25Z-1



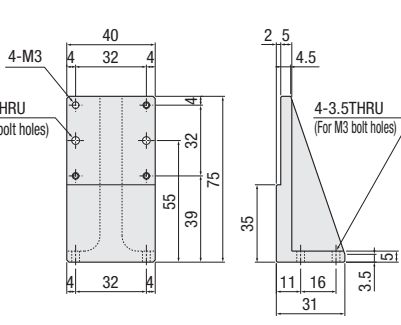
For SS stage □25mm
 ASS25Z-1: For BSS16-25
 ASB25Z-1: For BSB16-25



■ Z-axis Bracket ASS40Z-1/ASB40Z-1

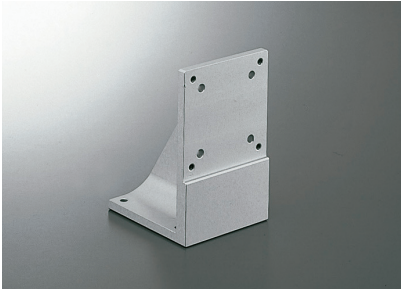


For □40mm linear stage
 ASS40Z-1: For BSS16-40
 For PG413
 ASB40Z-1: For BSB16-40

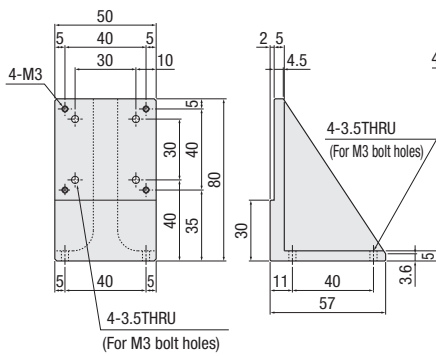


	SPEC									
Model	A47-5	A47-6	ASS80Z-1	A47-7	AS47-3	ASS25Z-1	ASB25Z-1	ASS40Z-1	ASB40Z-1	
Main material	Aluminum	Aluminum	Aluminum	Aluminum	Stainless	Aluminum	Aluminum	Aluminum	Aluminum	
Surface finishing	Black alumite	Black alumite	White alumite	Black alumite		White alumite	Black alumite	White alumite	Black alumite	
Weight	0.19kg	0.29kg	0.29kg	0.41kg	0.5kg	0.02kg	0.02kg	0.1kg	0.1kg	
Provided screws (Hex socket screws)	4 of M4-12	4 of M4-12	4 of M4-12	4 of M4-12	4 of M4-6	4 of M2-8	4 of M2-8	4 of M3-10	4 of M3-10	

■ Z-axis Bracket
ASS50Z-1



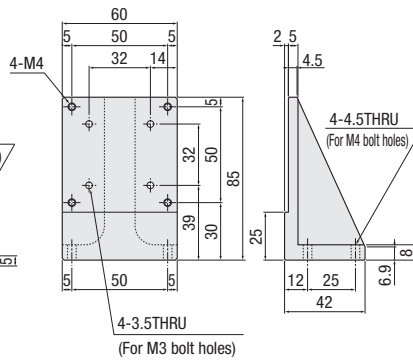
For □50mm linear stage
ASS50Z-1: For BSS16-50
For PG513 series



■ Z-axis Bracket
ASS60Z-1/ASB60Z-1



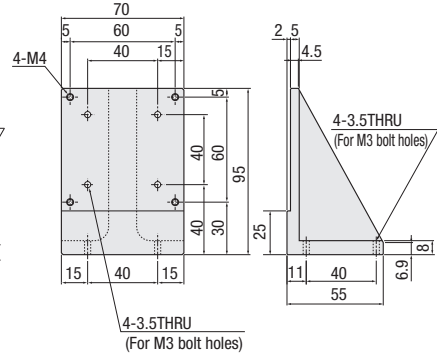
For □60mm linear stage
ASS60Z-1: For BSS16-60
For PG615 series
ASB60Z-1: For BSB16-60



■ Z-axis Bracket
ASS70Z-1



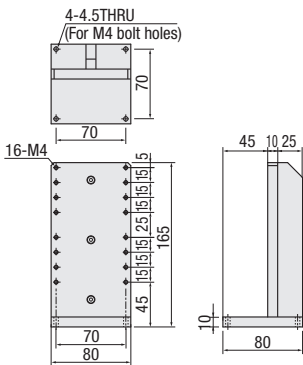
For □70mm linear stage
ASS70Z-1: For BSS16-70
For PG715 series



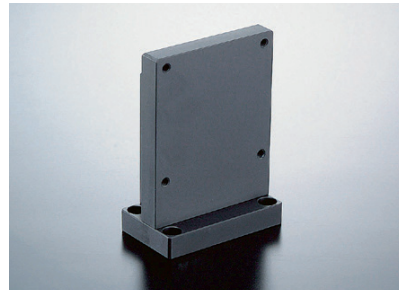
■ Z-axis Bracket
A47-101



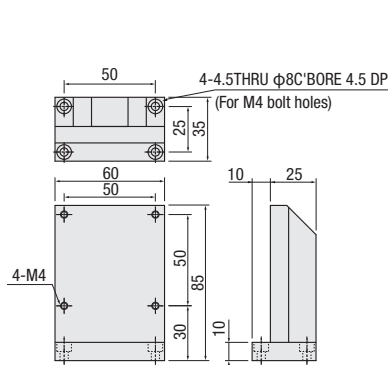
Z-axis bracket for motorized stage. Compatible stage
KS102-30, KS102-70.



■ Z-axis Bracket
A47-112



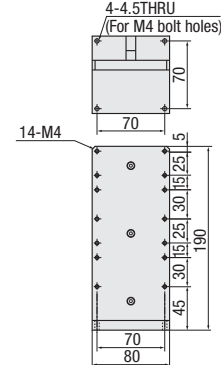
Z-axis bracket for motorized stage KXC06020/KS101-30
series.



■ Z-axis Bracket
A47-105



Z-axis bracket for motorized stage. Compatible stage
KS102-100

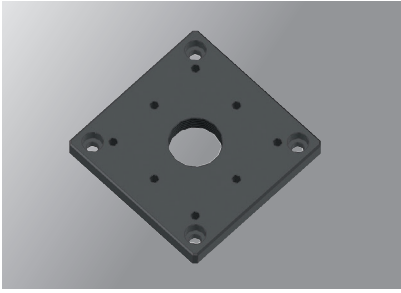


SPEC

Model	ASS50Z-1	ASS60Z-1	ASB60Z-1	ASS70Z-1	A47-101	A47-112	A47-105
Material—Surface finishing	Aluminum White alumite	Aluminum White alumite	Aluminum Black alumite	Aluminum White alumite	Aluminum Black alumite	Aluminum Black alumite	Aluminum Black alumite
Weight	0.2 kg	0.2 kg	0.2 kg	0.3 kg	0.6 kg	0.22 kg	0.67 kg
Provided screws (Hex socket screws)	4 of M3—10	4 of M4—12	4 of M4—12	4 of M3—12	4 of M4—16	4 of M4—12	4 of M4—16

Adaptor Plate

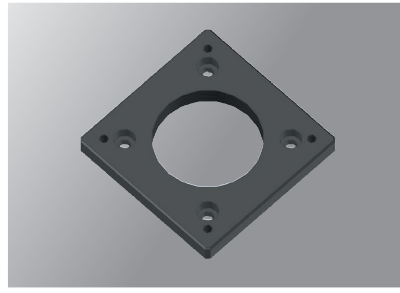
■ Adaptor plate
A49-50B-1/A49-50



This black adaptor plate is attached 40 x 40mm stage on a 50 x 50mm stage.

※White almite treatment for A49-50

■ Adaptor plate
A49-50B-2

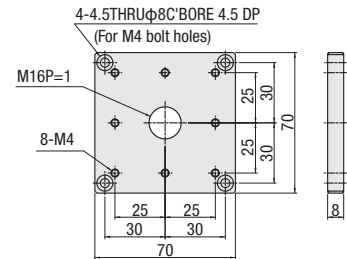
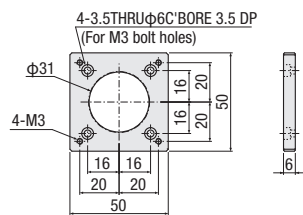
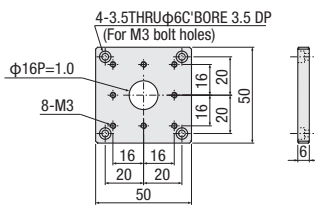


This black adaptor plate is attached 50 x 50mm stage on a 40x40 • 60x60 • $\phi 60$ • $\phi 75$ mm stage.

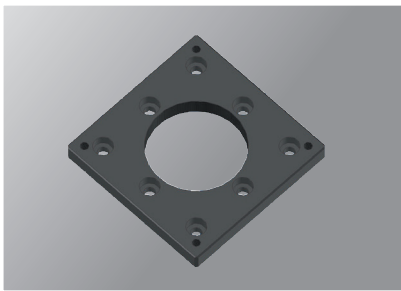
■ Adaptor plate
A49-70



This is a white adaptor plate for attachment 70 x 70mm and 60 x 60mm stage.

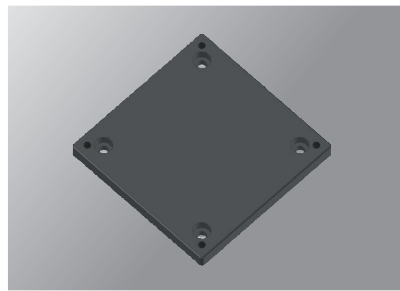


■ Adaptor plate
A49-70B-1

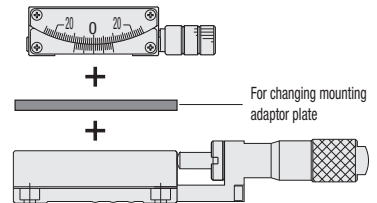
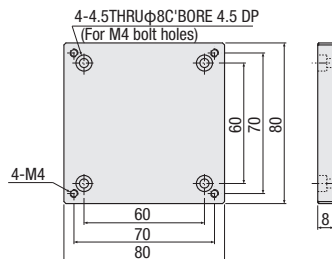
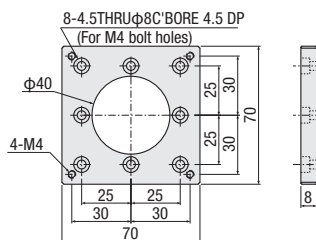


This black adaptor plate is attached 70 x 70mm stage on a 60x60 • 80x80 • 100x100mm • $\phi 75$ • $\phi 100$ mm stage.

■ Adaptor plate
A49-80

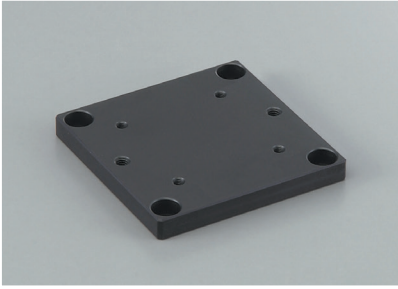


This black adaptor plate is attached 70x70mm on a 80x80mm stage and $\phi 75$ mm rotation stage.

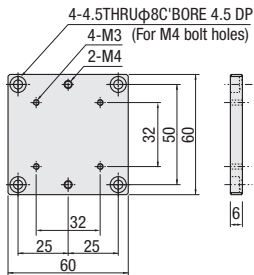


SPEC						
Model	A49-50B-1	A49-50B-2	A49-50	A49-70	A49-70B-1	A49-80
Main material	Aluminum	Aluminum	Aluminum	Aluminum	Aluminum	Aluminum
—Surface finishing	Black alumite processing	Black alumite processing	White alumite processing	White alumite processing	Black alumite processing	Black alumite processing
Weight	0.05 kg	0.05 kg	0.05 kg	0.11 kg	0.11 kg	0.13 kg
Provided screws (Hex socket screws)	4 of M3—8	4 of M3—8	4 of M3—8	4 of M4—8	4 of M4—8	4 of M4—8

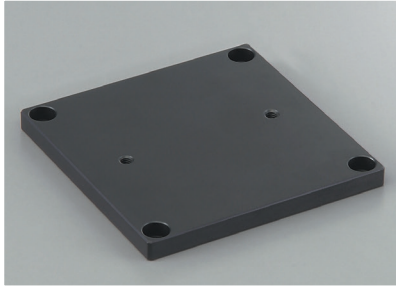
■ Adaptor plate
B05-A



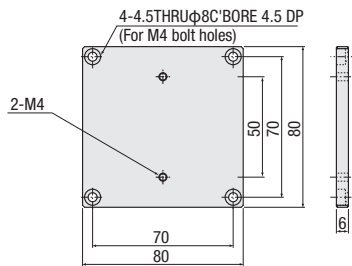
Lower plate for dovetail stage B05-11NHM,
B06-11M,B05-41NM,B05-21KM



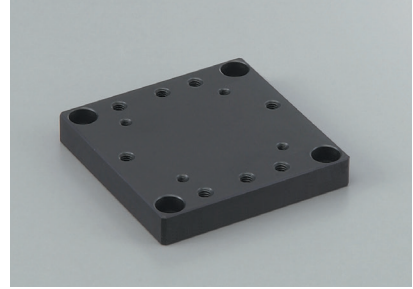
■ Adaptor plate
B06-03A



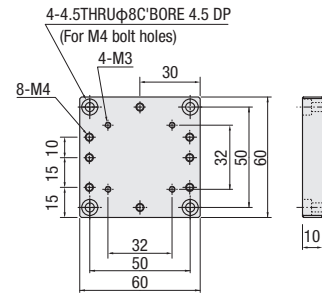
Lower plate for dovetail stage B06-11BM



■ Spacer □60 for optical axis height matching
A49-A



Lower plate for dovetail stage B05-11BM



SPEC			
Model	B05-A	B06-03A	A49-A
Main material—Surface finishing	Aluminum—Black alumite processing	Aluminum—Black alumite processing	Aluminum—Black alumite processing
Weight	0.05kg	0.10kg	0.09kg
Provided screws (Hex socket screws)	4 of M4—6	4 of M4—6	4 of M4—10

X

XY

Z

Horizontal
Z

XZ

Horizontal
XZ

XYZ

Horizontal
XYZ

Goniometer

Rotary

Unit

Accessories