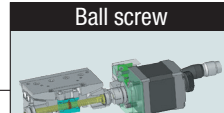




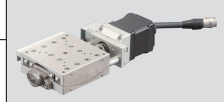


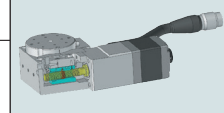



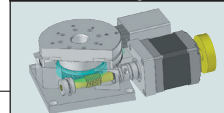

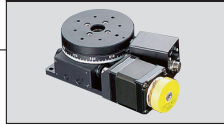
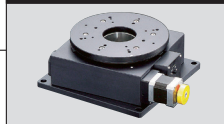


Motorized Linear Stage Lineup

	Travel guide	Model	
X-axis	Linear ball guide  Gothic-arch Groove Gothic-arch Groove ▶ P.1-007 KXT ▶ P.1-013 PG ▶ P.1-059 KXG ▶ P.1-083 KXL	KXT 	
		PG 	
		KXG 	
		KXL 	
		KXC 	
	Cross roller guide  ▶ P.1-131 KXC ▶ P.1-141 KX ▶ P.1-149 KS101,102	KX 	
		KS101, KS102 	
		KXS 	
		Liner ball guide  Gothic-arch Groove Gothic-arch Groove ▶ P.1-165	KHE 
			KH 
Horizontal Z-axis	Cross roller guide  ▶ P.1-117	KS332-8N, 12 	

Motorized Goniometer Stage Lineup

	Drive mechanism	Model
Goniometer Stage	Ball screw  ▶ P.1-189	KGB06 
		KGB07 
	Worm gear  ▶ P.1-205	KGW 
		KG 

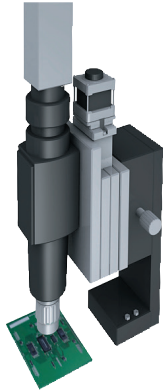
Motorized Rotary Stage Lineup

	Drive mechanism	Model
Rotary Stage	Ball screw  ▶ P.1-237	KRB 
		KRE04/06 
		KRE10360 
	Worm gear  ▶ P.1-257,267 KRE ▶ P.1-245 KRW ▶ P.1-261 KS402	KRW 
		KS402-75, 100 
		KS402-180 
		KS451 
	Direct drive ▶ P.1-269	

Auto Focus

An angular bearing is built in the stage.
It is useable in a stabilized state even the high-resolution-microscope.

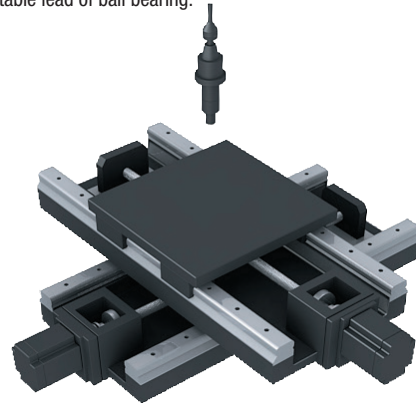
*Except for KXT series



■ Linear ball guide stage

High-rigidity XY Stages

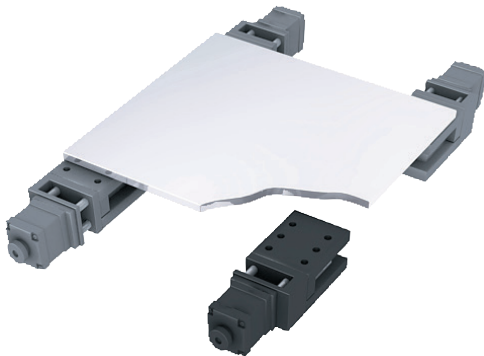
Load capacity 20kgf
Selectable lead of ball bearing.



■ XY slide guide

Liftable Panel and Plate

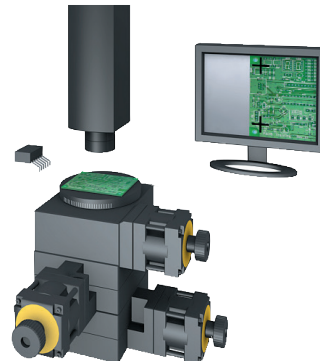
Available horizontal alignment with the horizontal Z stage.



■ Linear ball guide stage

Image Alignment (Rotation stage)

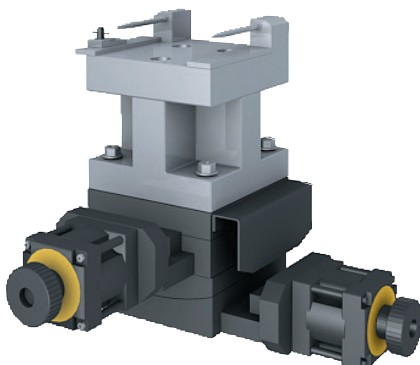
Can be used to interface with the image processing unit.
Sine motion stages that integrated a ball bearing drive are designed with durability.



■ Sine motion rotation stage

Angular Alignment of Optical Parts (Goniometer stage)

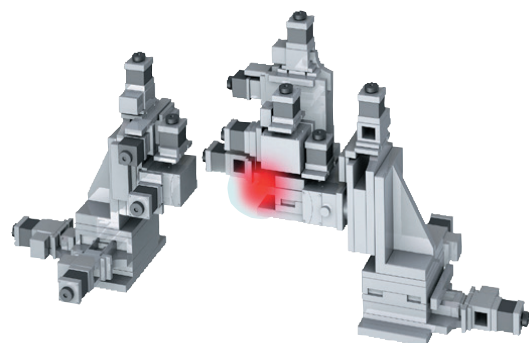
Fine angle adjustment of device for optical pick-up.
(It has excellent durability)



■ Sinemotion Goniometer stage

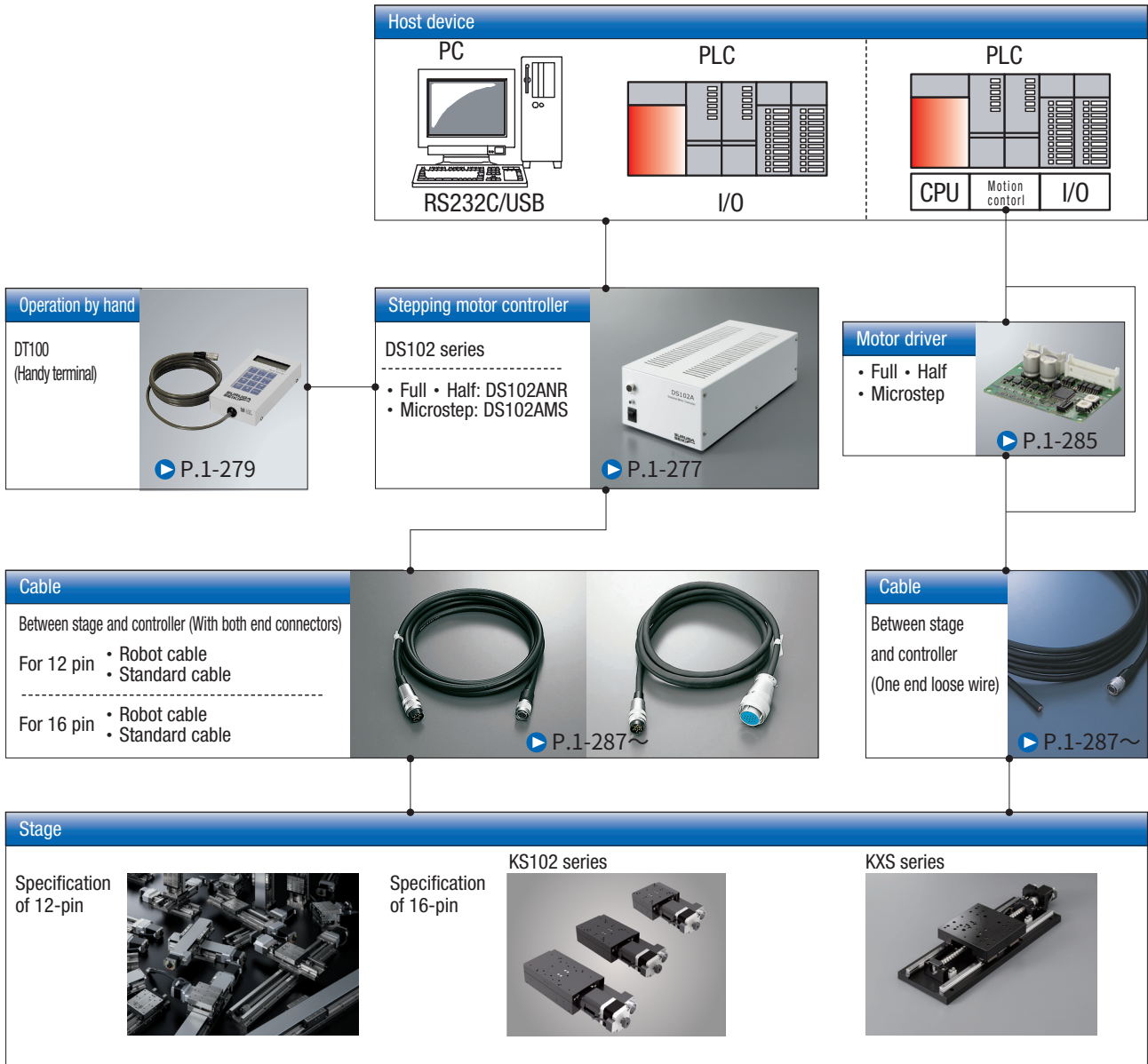
6-axis Stage Unit

It is ideal for alignment of LCD and digital camera image sensor.
Please contact us if you need more information for configurations.

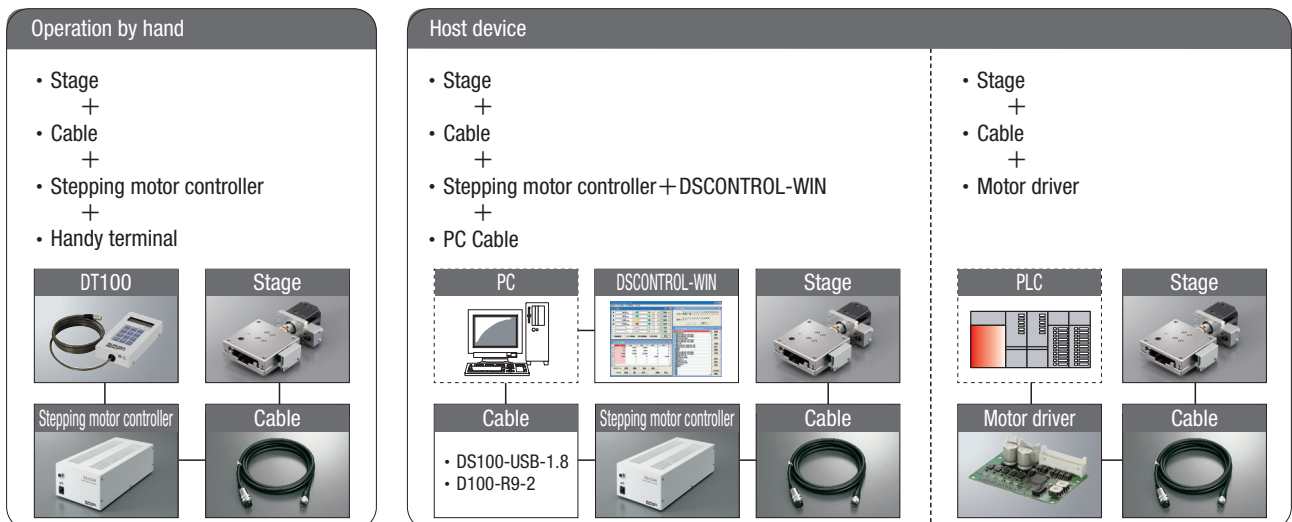


■ Stage unit (including special order)

Connection Example



Configurations



How to Check the Specification List

SPEC		
Model	KS000-00	
Mechanical specification	Travel length	00mm ----- ①
	Table size	00×00mm ----- ②
	Feed screw (Ball screw)	φ0 lead 0 ----- ③
	Guide	○○○○ ----- ④
	Main materials-Finishing	○○—○○ processing ----- ⑤
	Weight	0kg ----- ⑥
Accuracy specification	Resolution	Pulse ----- ⑦
	MAX speed	00mm/sec ----- ⑧
	Uni-directional positioning accuracy	Within 00μm ----- ⑨
	Repeatability positioning accuracy	Within ±00μm ----- ⑩
	Load capacity	0kgf 【ON】 ----- ⑪
	Moment stiffness	00°N・cm ----- ⑫
	Lost motion	Within 00μm ----- ⑬
	Backlash	Within 00μm ----- ⑭
	Straightness	Within 00μm ----- ⑮
	Parallelism	Within 00μm ----- ⑯
	Motion parallelism	Within 00μm ----- ⑰
	Pitching/Yawing	Within 00°/Within 00° ----- ⑱
	Sensor	Limit sensor
Origin sensor		Installed ----- ⑲
Slit origin sensor		----- ⑲
Provided screw (hexagon-headed bolt)	○ of M—○ ----- ⑳	

① Travel length

- Represent the distance of the stage surface from CW limit to CCW limit.
- Tracing diagram shows at the stroke center.

② Table size

- Shows size of stage table surface. Displays multiply width by length.

③ Feed screw (Ball screw)

- Shows size and lead of ball screw.

④ Guide

- Shows system of moving guide.

⑤ Main materials-Finishing

- Shows materials and surface finishing that is configured upper side of stage and housing.

⑥ Weight

- Shows mass of products. (not include cable weight)

⑦ Resolution

- Shows stage travel length for a signal per pulse. Basically spec shows resolution at the full-step. The division number of full-step, half-step and micro-step driver might be changed at the controller.

$$\text{Travel length per pulse (mm)} = \text{Ball bearing lead (mm)} \times \frac{\text{Motor step angle}}{360^\circ} \times \frac{1}{n}$$

※n is division number of micro-step.

n=1 is for full-step, n=2 is for half-step. Selectable micro-step from 1・・・250 division number 16 patterns. Stage only has Full/Half display can be divided with our driver for micro-step.

⑧ MAX speed

- Put maximum load, the speed that can be driven by full-step setting with our controller.

※Speed can be different based on the driver controller and the load.

⑨ Uni-directional positioning accuracy

- ▶ See the inspector instruction

⑩ Repeatability positioning accuracy

- ▶ See the inspector instruction

⑪ Load capacity

- Load capacity means it can be mounted on the center of the stage. Speed value shows drivable with maximum speed. Load capacity of Z stage shows 'Load capacity (at the excitation)'.

⑫ Moment stiffness

- ▶ See the inspector instruction

⑬ Lost motion

- ▶ See the inspector instruction

⑭ Backlash

- ▶ See the inspector instruction

⑮ Straightness

- ▶ See the inspector instruction

⑯ Parallelism

- ▶ See the inspector instruction

⑰ Motion parallelism

- ▶ See the inspector instruction

⑱ Pitching/yawing

- ▶ See the inspector instruction

⑲ Sensor

- Shows presence or absence of the equipment such as limit, origin and slit origin sensors.

⑳ Provided screw

- Shows size and numbers of the provided screws.